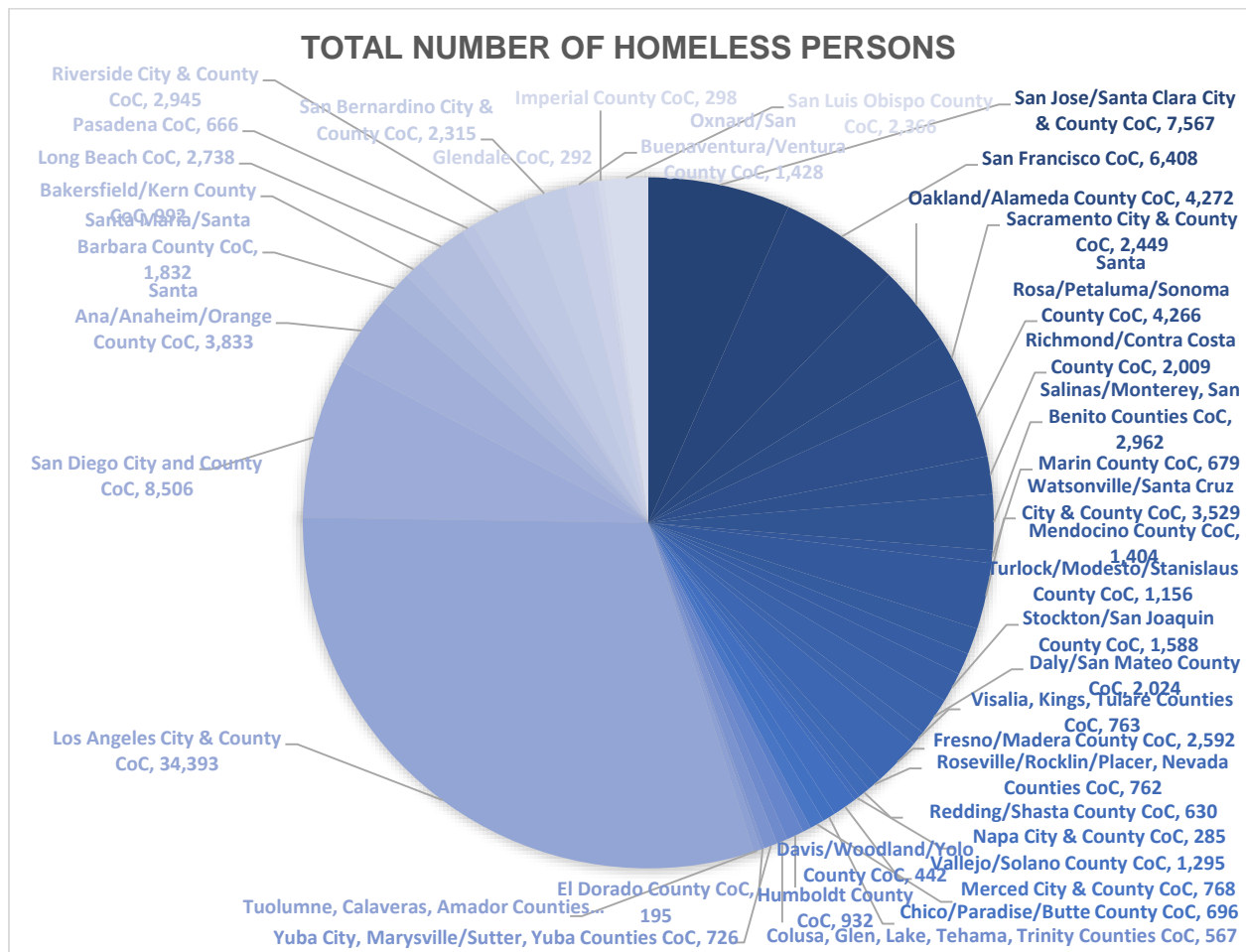


CALIFORNIA

In California, there were 113,952 homeless persons on a given night in January 2014. As the figure shows, 34,393 or thirty percent of the total number were in the Los Angeles City & County CoC. Sixty-nine percent of the total number were located in ten of California's forty CoCs: 34,393 in the Los Angeles City & County CoC, 8,506 were in the San Diego City and County CoC, 7,567 were in the San Jose/Santa Clara City & County CoC, 6,408 were in the San Francisco CoC, 4,272 were in the Oakland/Alameda County CoC, 4,266 were in the Santa Rosa/Petaluma/Sonoma County CoC, 3,833 were in the Santa Ana/Anaheim/Orange County CoC, 3,529 were in the Watsonville/Santa Cruz City & County CoC, 2,962 were in the Salinas/Monterey, San Benito Counties CoC, and 2,945 were in the Riverside City & County CoC. There were 1,999 children alone, 23,187 persons in households with children, 11,927 young adults ages 18 to 24 alone, and 76,839 adults ages 24 and older alone. Sixty-two percent of the homeless persons in California were without shelter.

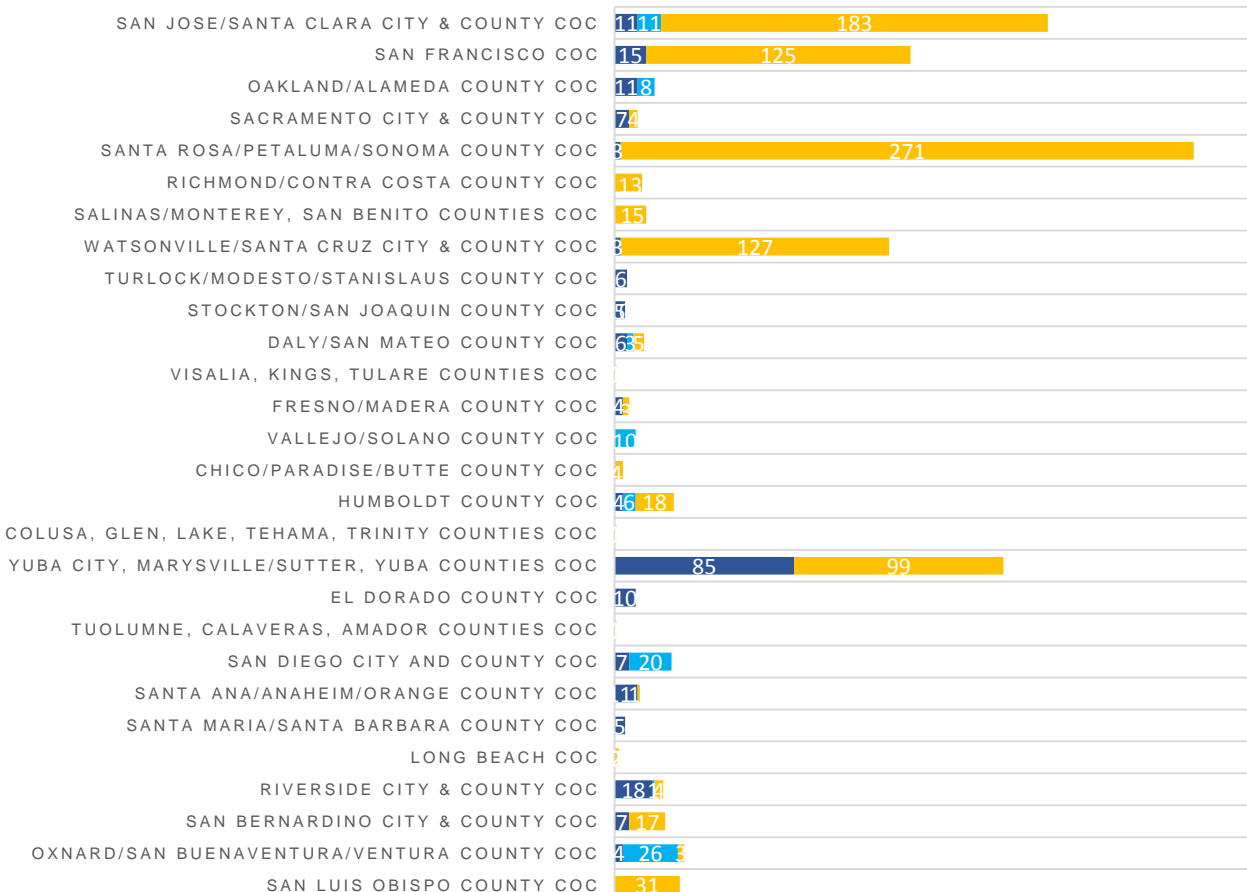


Children Alone

Of the 1,999 children alone, 38 percent were in the Los Angeles City & County CoC. The ten CoCs with the most homeless children living alone are as follows: 764 were in the Los Angeles City & County CoC, 274 were in the Santa Rosa/Petaluma/Sonoma County CoC, 205 were in the San Jose/Santa Clara City & County CoC, 184 were in the Yuba City, Marysville/Sutter, Yuba Counties CoC, 140 were in the San Francisco CoC, 130 were in the Watsonville/Santa Cruz City & County CoC, 33 were in the Oxnard/San Buenaventura/Ventura County CoC, 31 were in the San Luis Obispo County CoC, 28 were in the Humboldt CoC, 24 were in the San Bernardino City & County CoC, and 23 were in the Riverside City & County CoC.

HOUSHOLDS WITH ONLY CHILDREN

■ ES ■ TH ■ Unsheltered



Seventy-nine percent of the children living alone in California were without shelter. Of the 1,644 children living alone without shelter, 44 percent were in the Los Angeles City & County CoC. In the Los Angeles City & County CoC, 716 children alone were without shelter, 28 were in emergency shelters, and 20 were in transitional housing. In the Santa Rosa/Petaluma/Sonoma County CoC, 271 children alone were without shelter. In the San Jose/Santa Clara City & County CoC, 183 children alone were without shelter. In the Yuba City, Marysville/Sutter, Yuba Counties CoC, 99 children alone were unsheltered. In the San Francisco CoC, 125 children alone were without shelter. In the Watsonville/Santa Cruz City & County CoC, 127 children alone were without shelter. In the Oxnard/San Buenaventura/Ventura County CoC, 3 children alone were without shelter. In the San Luis Obispo County CoC, 31 children alone were without shelter. In the Humboldt County CoC, 18 children alone were without shelter. In the San Bernardino City & County CoC, 17 children alone were without shelter. In the Riverside City & County CoC, 4 children alone were without shelter.

The Housing Inventory Count reports only 214 to 344 youth beds available for children alone in California. When evaluating the number of beds needed in each CoC, a total of 1,526 to 1,558 additional beds are needed for children living alone without shelter in California. Approximately 85 percent of the additional beds are needed in six CoCs: Los Angeles City & County CoC, Santa Rosa/Petaluma/Sonoma County CoC, San Jose/Santa Clara City & County CoC, Watsonville/Santa Cruz City & County CoC, San Francisco CoC, and Yuba City, Marysville/Sutter, Yuba Counties CoC. Approximately 40 percent of the additional beds are needed in the Los Angeles City & County CoC alone.

| Continuum of Care | Children Alone Without Shelter | Emergency Shelter Youth Beds Available for Children Alone | Transitional Housing Youth Beds Available for Children Alone | Permanent Supportive Housing Beds Available for Children Alone | Additional Beds Needed for Children Alone |
|---|--------------------------------|---|--|--|---|
| San Jose/Santa Clara City & County CoC | 183 | 11 | 2 | 0 – 2 | 168 – 170 |
| San Francisco CoC | 125 | 5 | 0 | 0 | 120 |
| Oakland/Alameda County CoC | 0 | 5 | 0 | 0 | 0 |
| Sacramento City & County CoC | 4 | 3 | 0 – 17 | 0 | 0 – 1 |
| Santa Rosa/Petaluma/Sonoma County CoC | 271 | 3 | 0 | 0 | 268 |
| Richmond/Contra Costa County CoC | 13 | 0 | 0 | 0 | 13 |
| Salinas/Monterey, San Benito Counties CoC | 15 | 2 | 0 | 0 | 13 |
| Marin County CoC | 0 | 0 | 0 | 0 | 0 |
| Mendocino County CoC | 0 | 1 | 0 | 0 | 0 |

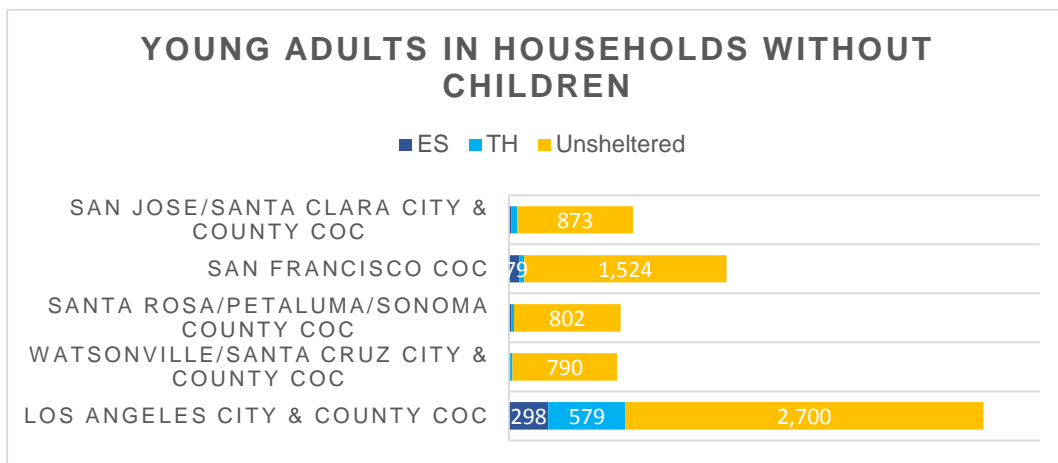
HOMELESS CHILDREN, ADULTS, AND FAMILIES & NEEDED SHELTER BEDS – 2014

| | | | | | |
|--|-------|-----------|--------|---------|---------------|
| Watsonville/Santa Cruz City & County CoC | 127 | 0 | 0 | 0 | 127 |
| Turlock/Modesto/Stanislaus County CoC | 0 | 46 | 0 | 0 | 0 |
| Stockton/San Joaquin County CoC | 0 | 0 – 2 | 0 | 0 – 7 | 0 |
| Daly/San Mateo County CoC | 5 | 0 | 0 | 0 | 5 |
| Visalia, Kings, Tulare Counties CoC | 1 | 0 | 0 – 3 | 0 | 0 – 1 |
| Fresno/Madera County CoC | 3 | 8 | 0 – 14 | 13 – 20 | 0 |
| Roseville/Rocklin/Placer, Nevada Counties CoC | 0 | 0 | 0 | 0 | 0 |
| Redding/Shasta County CoC | 0 | 0 – 6 | 0 – 11 | 0 | 0 |
| Napa City & County CoC | 0 | 0 – 5 | 0 | 0 | 0 |
| Vallejo/Solano County CoC | 0 | 4 | 1 | 0 | 0 |
| Chico/Paradise/Butte County CoC | 4 | 0 | 0 | 0 | 4 |
| Merced City & County CoC | 0 | 0 | 0 | 0 | 0 |
| Davis/Woodland/Yolo County CoC | 0 | 3 | 0 | 0 | 0 |
| Humboldt County CoC | 18 | 1 | 1 | 0 | 16 |
| Colusa, Glen, Lake, Tehama, Trinity Counties CoC | 1 | 0 | 0 | 0 | 1 |
| Yuba City, Marysville/Sutter, Yuba Counties CoC | 99 | 0 – 5 | 0 – 4 | 0 | 90 – 99 |
| El Dorado County CoC | 0 | 6 | 0 | 0 | 0 |
| Tuolumne, Calaveras, Amador Counties CoC | 1 | 0 | 0 | 0 | 1 |
| San Diego City and County CoC | 0 | 14 | 0 – 25 | 0 | 0 |
| Santa Ana/Anaheim/Orange County CoC | 1 | 13 | 0 | 0 | 0 |
| Los Angeles City & County CoC | 716 | 45 | 0 – 4 | 0 – 15 | 652 – 671 |
| Santa Maria/Santa Barbara County CoC | 0 | 3 | 0 | 0 | 0 |
| Bakersfield/Kern County CoC | 0 | 0 | 0 | 0 | 0 |
| Long Beach CoC | 2 | 0 | 0 | 0 | 2 |
| Pasadena CoC | 0 | 0 | 0 | 0 | 0 |
| Riverside City & County CoC | 4 | 19 | 0 | 0 | 0 |
| San Bernardino City & County CoC | 17 | 5 | 0 | 0 | 12 |
| Oxnard/San Buenaventura/Ventura County CoC | 3 | 0 | 0 | 0 | 3 |
| Glendale CoC | 0 | 0 | 0 | 0 | 0 |
| Imperial County CoC | 0 | 0 | 0 | 0 | 0 |
| San Luis Obispo County CoC | 31 | 0 | 0 | 0 | 31 |
| California Total | 1,644 | 197 – 215 | 4 – 82 | 13 – 44 | 1,526 – 1,558 |

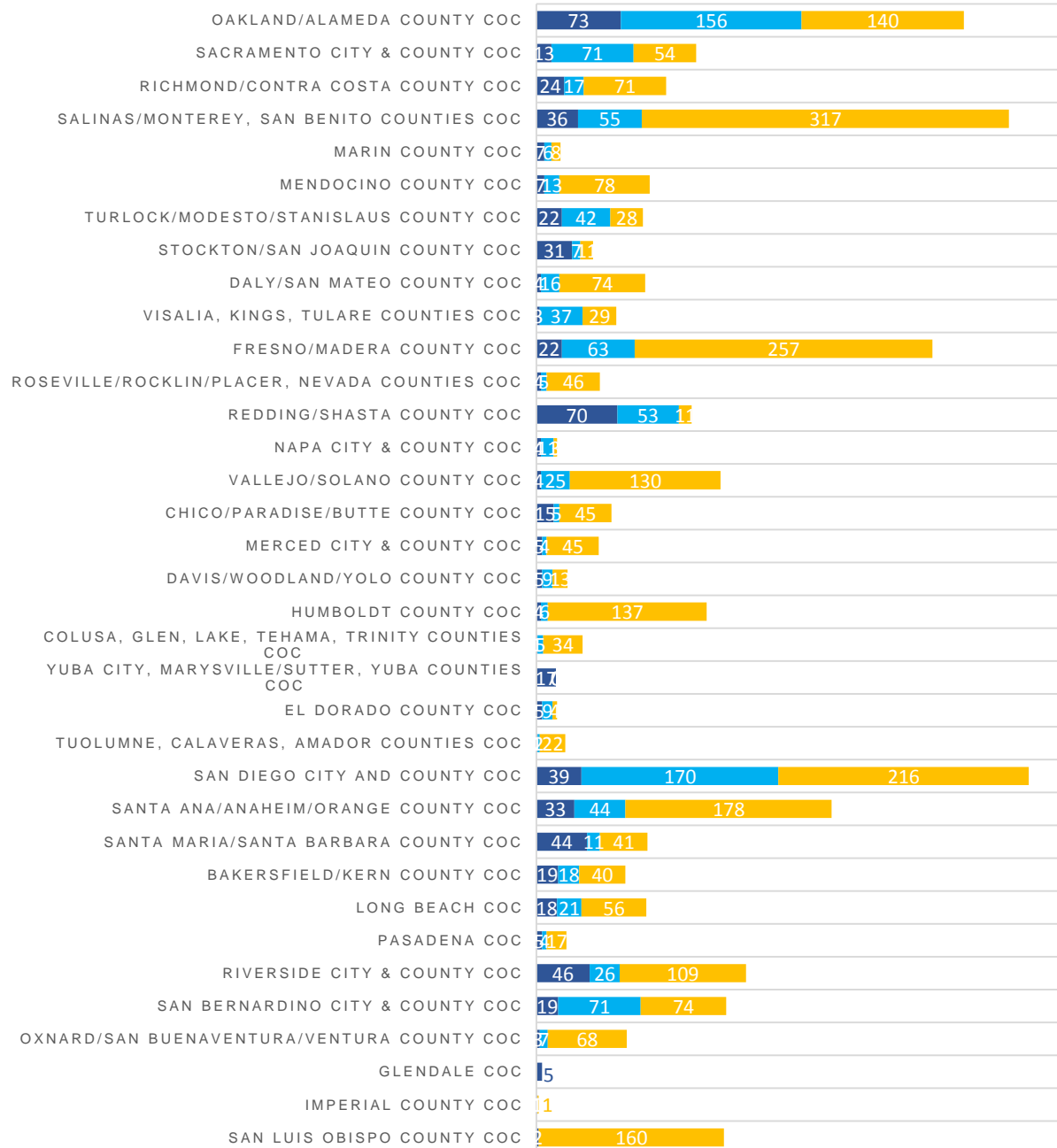
Young Adults Alone

Of the 11,927 young adults living alone in California, 1,033 were in emergency shelters, 1,688 were in transitional housing, and 9,206 were without shelter. Sixty-five percent of the young adults were living in the five continuum of cares San Jose/Santa Clara City & County CoC, San Francisco CoC, Santa Rosa/Petaluma/Sonoma County CoC, Watsonville/Santa Cruz City & County CoC, and Los Angeles City & County CoC. Twenty-nine percent of the young adults were living in the Los Angeles City & County CoC.

Similarly, of the young adults without shelter, 72 percent were in these same five CoCs with 29 percent in the Los Angeles City & County CoC. Although 9,206 young adults without shelter were in 38 of California's 40 CoCs, the Housing Inventory Count reports only 221 to 361 youth beds were available for young adults alone in California. When evaluating the number of beds needed in each CoC, a total of 8,848 to 8,985 additional beds are needed for young adults alone without shelter in California. Approximately 73 percent of the additional beds are needed in the five continuum of cares discussed above: San Jose/Santa Clara City & County CoC (861 to 863 more beds needed), San Francisco CoC (1,471 more beds needed), Santa Rosa/Petaluma/Sonoma County CoC (796 more beds needed), Watsonville/Santa Cruz City & County CoC (787 more beds needed), and Los Angeles City & County CoC (2,586 to 2,616 more beds needed).



HOMELESS CHILDREN, ADULTS, AND FAMILIES & NEEDED SHELTER BEDS – 2014



HOMELESS CHILDREN, ADULTS, AND FAMILIES & NEEDED SHELTER BEDS – 2014

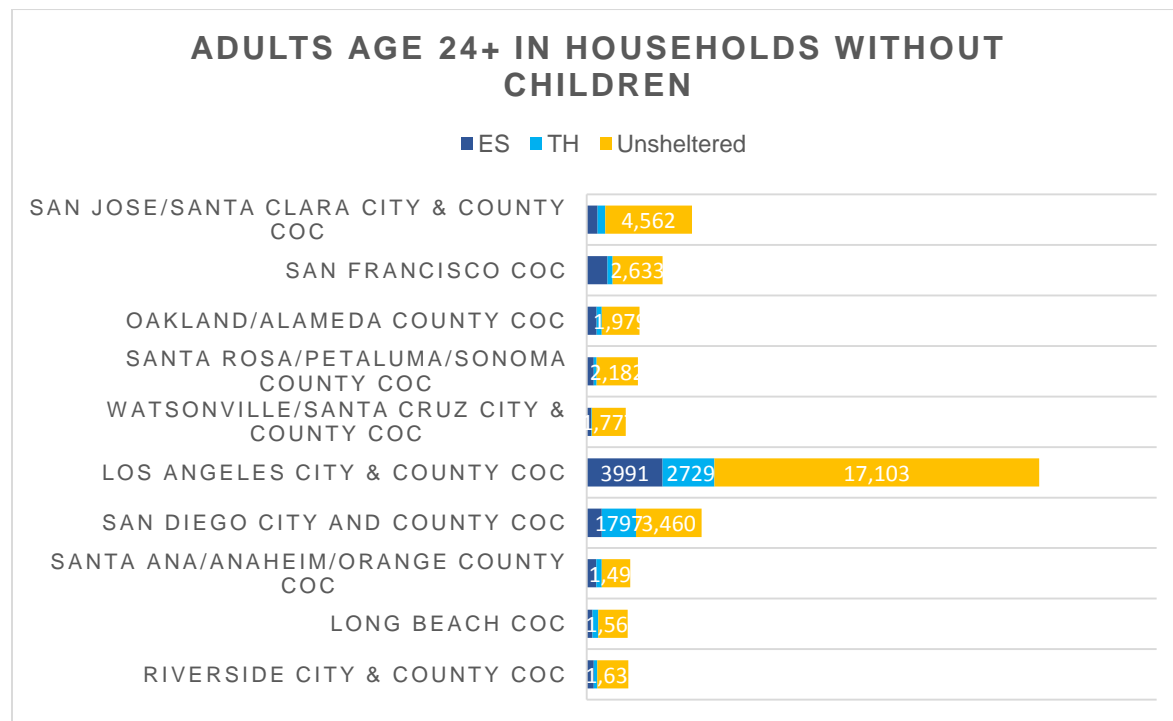
| Continuum of Care | Young Adults Alone Without Shelter | Emergency Shelter Beds Available for Young Adults Alone | Transitional Housing Beds Available for Young Adults Alone | Permanent Supportive Housing Beds Available for Young Adults Alone | Additional Beds Needed for Young Adults Alone |
|--|------------------------------------|---|--|--|---|
| San Jose/Santa Clara City & County CoC | 873 | 10 | 0 | 0 – 2 | 861 – 863 |
| San Francisco CoC | 1,524 | 3 | 0 | 50 | 1,471 |
| Oakland/Alameda County CoC | 140 | 7 | 6 | 0 | 127 |
| Sacramento City & County CoC | 54 | 0 | 0 – 17 | 0 | 37 – 54 |
| Santa Rosa/Petaluma/Sonoma County CoC | 802 | 1 | 0 | 5 | 796 |
| Richmond/Contra Costa County CoC | 71 | 0 – 8 | 0 | 1 | 63 – 70 |
| Salinas/Monterey, San Benito Counties CoC | 317 | 0 | 0 | 0 | 317 |
| Marin County CoC | 8 | 0 | 0 | 0 | 8 |
| Mendocino County CoC | 78 | 0 | 0 | 0 | 78 |
| Watsonville/Santa Cruz City & County CoC | 790 | 0 | 3 | 0 | 787 |
| Turlock/Modesto/Stanslaus County CoC | 28 | 0 | 0 | 0 | 28 |
| Stockton/San Joaquin County CoC | 11 | 4 – 6 | 0 | 0 – 7 | 0 – 7 |
| Daly/San Mateo County CoC | 74 | 0 | 1 | 0 | 73 |
| Visalia, Kings, Tulare Counties CoC | 29 | 0 | 0 – 3 | 2 | 24 – 27 |
| Fresno/Madera County CoC | 257 | 0 | 0 – 16 | 6 – 13 | 228 – 251 |
| Roseville/Rocklin/Placer, Nevada Counties CoC | 46 | 0 | 0 | 0 | 46 |
| Redding/Shasta County CoC | 11 | 0 | 0 – 2 | 0 | 9 – 11 |
| Napa City & County CoC | 3 | 0 | 0 | 0 | 3 |
| Vallejo/Solano County CoC | 130 | 0 | 0 | 0 | 130 |
| Chico/Paradise/Butte County CoC | 45 | 0 | 0 | 0 – 4 | 41 – 45 |
| Merced City & County CoC | 45 | 0 | 0 | 0 | 45 |
| Davis/Woodland/Yolo County CoC | 13 | 0 | 2 | 0 | 11 |
| Humboldt County CoC | 137 | 0 | 0 | 0 | 137 |
| Colusa, Glen, Lake, Tehama, Trinity Counties CoC | 34 | 0 | 0 | 0 | 34 |
| Yuba City, Marysville/Sutter, Yuba Counties CoC | 0 | 0 | 0 | 0 | 0 |
| El Dorado County CoC | 4 | 0 | 0 | 0 | 4 |
| Tuolumne, Calaveras, Amador Counties CoC | 22 | 0 | 4 | 0 | 18 |

HOMELESS CHILDREN, ADULTS, AND FAMILIES & NEEDED SHELTER BEDS – 2014

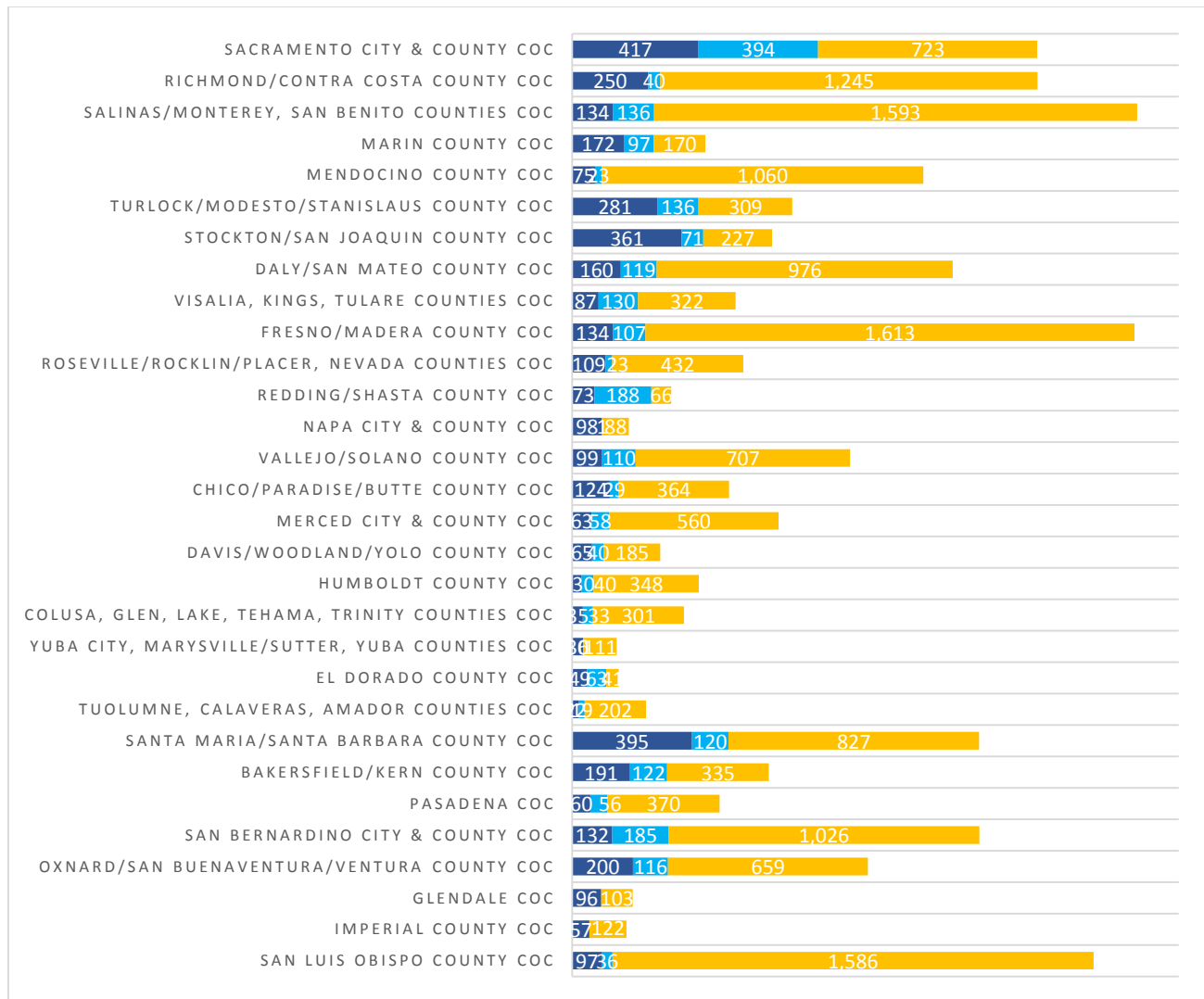
| | | | | | |
|--|-------|---------|----------|-----------|---------------|
| San Diego City and County CoC | 216 | 0 | 2 – 44 | 0 | 172 – 214 |
| Santa Ana/Anaheim/Orange County CoC | 178 | 0 | 0 | 0 | 178 |
| Los Angeles City & County CoC | 2,700 | 0 | 36 – 51 | 48 – 63 | 2,586 – 2,616 |
| Santa Maria/Santa Barbara County CoC | 41 | 0 | 0 | 0 | 41 |
| Bakersfield/Kern County CoC | 40 | 0 | 0 | 0 | 40 |
| Long Beach CoC | 56 | 0 | 0 | 0 | 56 |
| Pasadena CoC | 17 | 0 | 0 | 0 | 17 |
| Riverside City & County CoC | 109 | 0 | 3 | 0 | 106 |
| San Bernardino City & County CoC | 74 | 15 | 0 | 12 | 47 |
| Oxnard/San Buenaventura/Ventura County CoC | 68 | 0 | 0 | 0 | 68 |
| Glendale CoC | 0 | 0 | 0 | 0 | 0 |
| Imperial County CoC | 1 | 0 | 0 | 0 | 1 |
| San Luis Obispo County CoC | 160 | 0 | 0 | 0 | 160 |
| California Total | 9,206 | 40 – 50 | 57 – 152 | 124 – 159 | 8,848 – 8,985 |

Adults Alone

Of the 76,839 adults age 24 and older living in households without children in California, 12,831 were in emergency shelters, 8,950 were in transitional housing, and 55,058 were without shelter. Sixty-nine percent of the adults age 24 and older were located in the following ten CoCs: San Jose/Santa Clara City & County CoC (5,540 individuals), San Francisco CoC (3,996 individuals), Oakland/Alameda County CoC (2,774 individuals), Santa Rosa/Petaluma/Sonoma County CoC (2,701 individuals), Watsonville/Santa Cruz City & County CoC (2,050 individuals), Los Angeles City & County CoC (23,823 individuals), San Diego City & County CoC (6,047 individuals), Santa Ana/Anaheim/Orange County CoC (2,294 individuals), Long Beach CoC (2,163 individuals), and Riverside City & County CoC (2,186 individuals). Thirty-one percent of the adults age 24 and older were living in the Los Angeles City & County CoC.



HOMELESS CHILDREN, ADULTS, AND FAMILIES & NEEDED SHELTER BEDS – 2014



Although 55,058 adult individuals 24 and older without shelter in California's 40 CoCs, the Housing Inventory Count reports only 6,781 to 8,887 beds were available. A total of 46,172 to 48,278 additional beds are needed for adult individuals 24 and older in all of California's CoCs.

Half of the additional beds are needed in the five continuum of cares with the greatest number of adult individuals 24 and older living without shelter: San Jose/Santa Clara City & County CoC (3,949 to 4,052 more beds needed), San Francisco CoC (2,033 to 2,111 more beds needed), Santa Rosa/Petaluma/Sonoma County CoC (2,070 to 2,113 more beds needed), Los Angeles City & County CoC (13,611 to 13,918 more beds needed), and San Diego City & County CoC (2,694 to 3,051 more beds needed).

HOMELESS CHILDREN, ADULTS, AND FAMILIES & NEEDED SHELTER BEDS – 2014

| Continuum of Care | Adult Individuals Without Shelter | Emergency Shelter Beds Available for Households Without Children | Transitional Housing Beds Available for Households Without Children | Permanent Supportive Housing Beds Available for Households Without Children | Additional Beds Needed for Adults 24+ Alone |
|---|-----------------------------------|--|---|---|---|
| San Jose/Santa Clara City & County CoC | 4,562 | 13 – 19 (0 – 4 DV) | 73 – 96 (30 V) | 419 – 490 (0 – 8 DV) | 3,949 – 4,052 ¹ |
| San Francisco CoC | 2,633 | 215 – 223 (0 – 8 DV & 13 – 32 V) | 12 (10 V) | 295 – 365 (37 V) | 2,033 – 2,111 |
| Oakland/Alameda County CoC | 1,979 | 28 – 60 (0 – 16 DV & 0 – 2 V) | 48 – 51 (0 – 3 DV) | 183 (25 V) | 1,675 – 1,710 ² |
| Sacramento City & County CoC | 723 | 20 – 38 (0 – 18 DV & 3 V) | 29 (4 V) | 26 (12 V) | 630 – 648 |
| Santa Rosa/Petaluma/Sonoma County CoC | 2,182 | 27 – 43 (5 – 7 DV) | 19 (1 V) | 15 – 42 (15 – 25 V) | 2,070 – 2,113 ³ |
| Richmond/Contra Costa County CoC | 1,245 | 23 (1 – 6 V) | 0 | 19 | 1,203 |
| Salinas/Monterey, San Benito Counties CoC | 1,593 | 85 | 13 – 23 | 18 – 26 | 1,459 – 1,477 |
| Marin County CoC | 170 | 13 | 15 – 16 (8 V) | 19 – 25 (1 V) | 116 – 123 |
| Watsonville/Santa Cruz City & County CoC | 1,777 | 41 – 44 (0 – 3 DV) | 3 | 20 – 28 (20 – 28 V) | 1,702 – 1,713 |
| Mendocino County CoC | 1,060 | 6 – 11 (0 – 4 DV) | 9 – 18 | 0 – 85 | 946 – 1,045 |
| Turlock/Modesto/Stanislaus County CoC | 309 | 3 – 17 | 11 – 15 (3 V) | 2 – 7 (3 – 4 V) | 270 – 293 |
| Stockton/San Joaquin County CoC | 227 | 42 – 109 (0 – 5 DV & 6 V) | 33 – 48 (14 V) | 7 | 63 – 145 |
| Daly/San Mateo County CoC | 976 | 36 (26 V) | 18 – 19 (3 V) | 10 – 16 | 905 – 912 |
| Visalia, Kings, Tulare Counties CoC | 322 | 2 – 47 (0 – 10 DV) | 51 – 55 | 18 – 50 (0 – 1 V) | 170 – 251 |
| Fresno/Madera County CoC | 1,613 | 26 – 46 (15 – 29 DV) | 16 – 17 (1 DV & 4 V) | 69 – 141 (45 – 102 V) | 1,408 – 1,501 ⁴ |
| Roseville/Rocklin/Placer, Nevada Counties CoC | 432 | 14 – 41 (0 – 17 DV) | 0 – 2 (0 – 2 DV) | 2 | 387 – 416 |
| Redding/Shasta County CoC | 66 | 16 | 38 – 40 (6 – 8 V) | 0 | 10 – 12 |
| Napa City & County CoC | 88 | 7 | 0 | 0 | 81 |

HOMELESS CHILDREN, ADULTS, AND FAMILIES & NEEDED SHELTER BEDS – 2014

| | | | | | |
|--|--------|------------------------------|-------------------------------------|-------------------------|------------------------------|
| Vallejo/Solano County CoC | 707 | 0 – 30 (0 – 1 DV) | 18 – 26 (4 – 7 V) | 9 – 11 | 633 – 673 ⁵ |
| Chico/Paradise/Butte County CoC | 364 | 18 – 46 (0 – 7 DV) | 5 (2 V) | 7 – 26 (0 – 19 V) | 287 – 334 |
| Merced City & County CoC | 560 | 25 | 28 – 50 | 13 | 472 – 494 |
| Davis/Woodland/Yolo County CoC | 185 | 36 – 50 (0 – 8 DV & 4 V) | 2 | 0 | 133 – 147 |
| Humboldt County CoC | 348 | 5 | 13 | 0 | 330 |
| Colusa, Glen, Lake, Tehama, Trinity Counties CoC | 301 | 0 – 2 | 4 – 6 | 0 | 293 – 297 |
| Yuba City, Marysville/Sutter, Yuba Counties CoC | 111 | 36 | 4 | 0 | 71 |
| El Dorado County CoC | 41 | 0 | 0 | 0 | 41 |
| Tuolumne, Calaveras, Amador Counties CoC | 202 | 0 – 10 (0 – 1 DV) | 0 – 3 (0 – 3 DV) | 1 | 188 – 201 |
| Los Angeles City & County CoC | 17,103 | 233 – 258 (1 – 26 DV & 8 V) | 741 – 915 (0 – 38 DV & 194 – 299 V) | 2,195 – 2,303 (1,010 V) | 13,611 – 13,918 ⁶ |
| San Diego City and County CoC | 3,460 | 29 – 45 (3 – 19 DV) | 199 – 229 (0 – 1 DV & 54 – 57 V) | 173 – 484 (50 – 314 V) | 2,694 – 3,051 ⁷ |
| Santa Ana/Anaheim/Orange County CoC | 1,496 | 17 – 28 (6 – 17 DV) | 45 – 105 (0 – 11 DV & 9 V) | 20 – 109 (1 – 81 V) | 1,254 – 1,414 |
| Santa Maria/Santa Barbara County CoC | 827 | 0 – 1 (0 – 1 DV) | 22 – 23 (0 – 1 DV & 15 V) | 67 | 736 – 738 |
| Bakersfield/Kern County CoC | 335 | 51 – 64 (0 – 13 DV & 13 V) | 41 – 48 (0 – 7 DV & 10 V) | 137 – 156 (26 – 39 V) | 67 – 106 |
| Long Beach CoC | 1,564 | 40 – 48 (0 – 8 DV) | 96 (92 V) | 11 – 46 (11 – 46 V) | 1,367 – 1,410 ⁸ |
| Pasadena CoC | 370 | 23 – 28 (0 – 5 DV) | 0 – 3 | 2 – 26 | 313 – 345 |
| Riverside City & County CoC | 1,631 | 64 – 123 (12 – 27 DV) | 17 – 64 (1 V) | 30 – 65 (2 V) | 1,379 – 1,520 |
| San Bernardino City & County CoC | 1,026 | 25 – 35 (0 – 7 DV & 0 – 1 V) | 2 – 36 (0 – 12 DV & 0 – 3 V) | 4 – 52 (4 – 44 V) | 903 – 995 |
| Oxnard/San Buenaventura/Ventura County CoC | 659 | 23 – 26 (4 – 7 DV) | 21 – 27 (1 V) | 4 (3 V) | 602 – 611 |
| Glendale CoC | 103 | 0 – 12 | 0 | 0 – 4 | 87 – 103 |
| Imperial County CoC | 122 | 7 – 11 | 0 | 0 | 111 – 115 |
| San Luis Obispo County CoC | 1,586 | 15 – 29 (2 – 6 DV) | 0 | 13 – 34 | 1,523 – 1,558 |

HOMELESS CHILDREN, ADULTS, AND FAMILIES & NEEDED SHELTER BEDS – 2014

| | | | | | |
|------------------|--------|--|---|---|-----------------------------------|
| California Total | 55,058 | 1,264 – 1,790 (48 – 274 DV & 74 – 101 V) | 1,646 – 2,118 (1 – 79 DV & 465 – 581 V) | 3,808 – 4,913 (0 – 8 DV & 1,265 – 1,793 V) | 46,172 – 48,278 ¹⁻⁸ |
|------------------|--------|--|---|---|-----------------------------------|

Notes:

V = Veteran bed

DV = Domestic Violence Bed

¹ Total reflects 1 SH bed and 4 to 7 RRH beds (4-7 V) available for households without children

² Total reflects 10 SH beds available for households without children

³ Total reflects 8 OPH beds available for households without children

⁴ Total reflects 1 SH bed available for households without children

⁵ Total reflects 7 RRH beds available for households without children

⁶ Total reflects 4 SH beds and 12 OPH beds available for households without children

⁷ Total reflects 8 SH beds (0 to 2 V) and 1 (1 V) OPH bed available for households without children

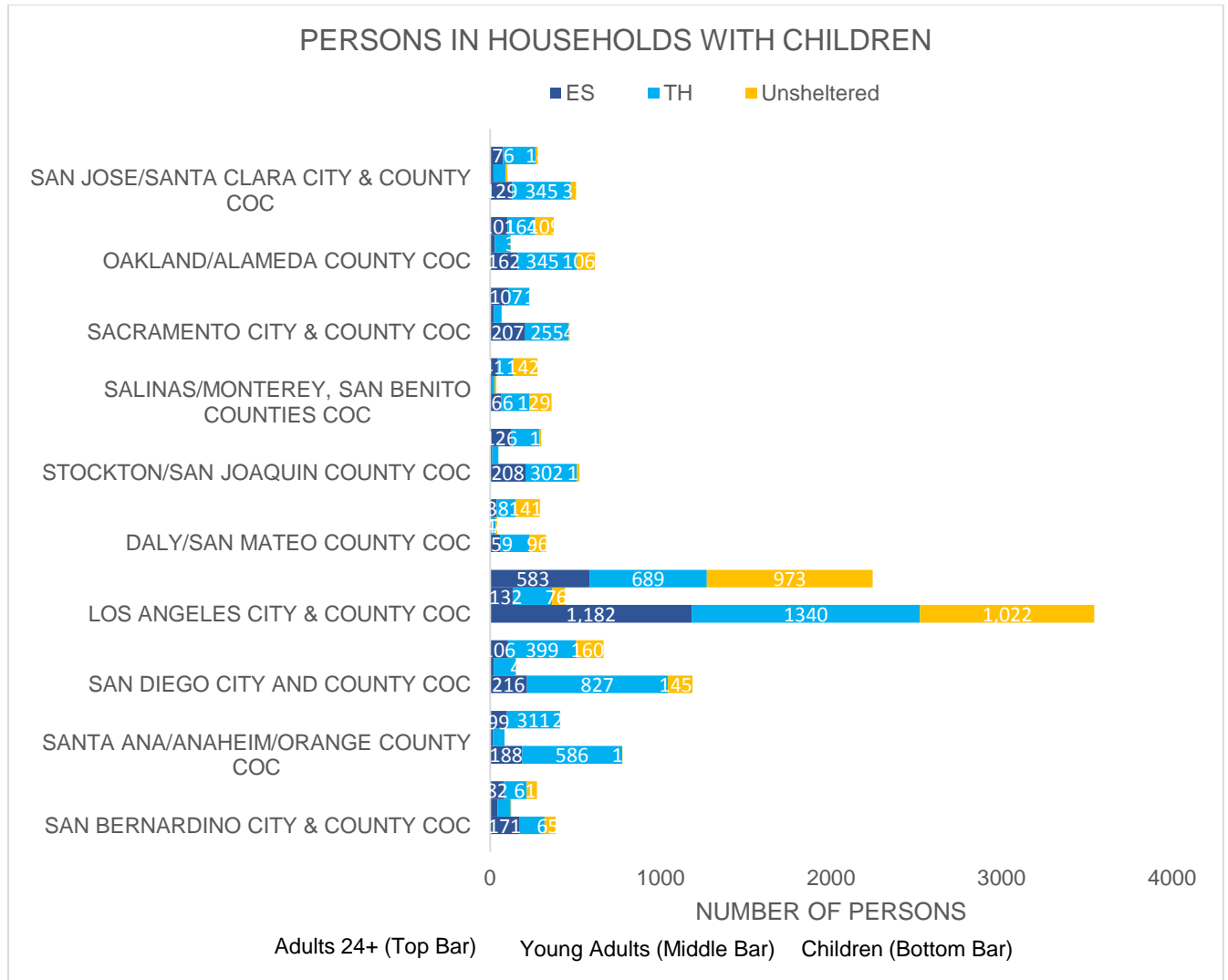
⁸ Total reflects 7 SH beds available for households without children

Families With Children

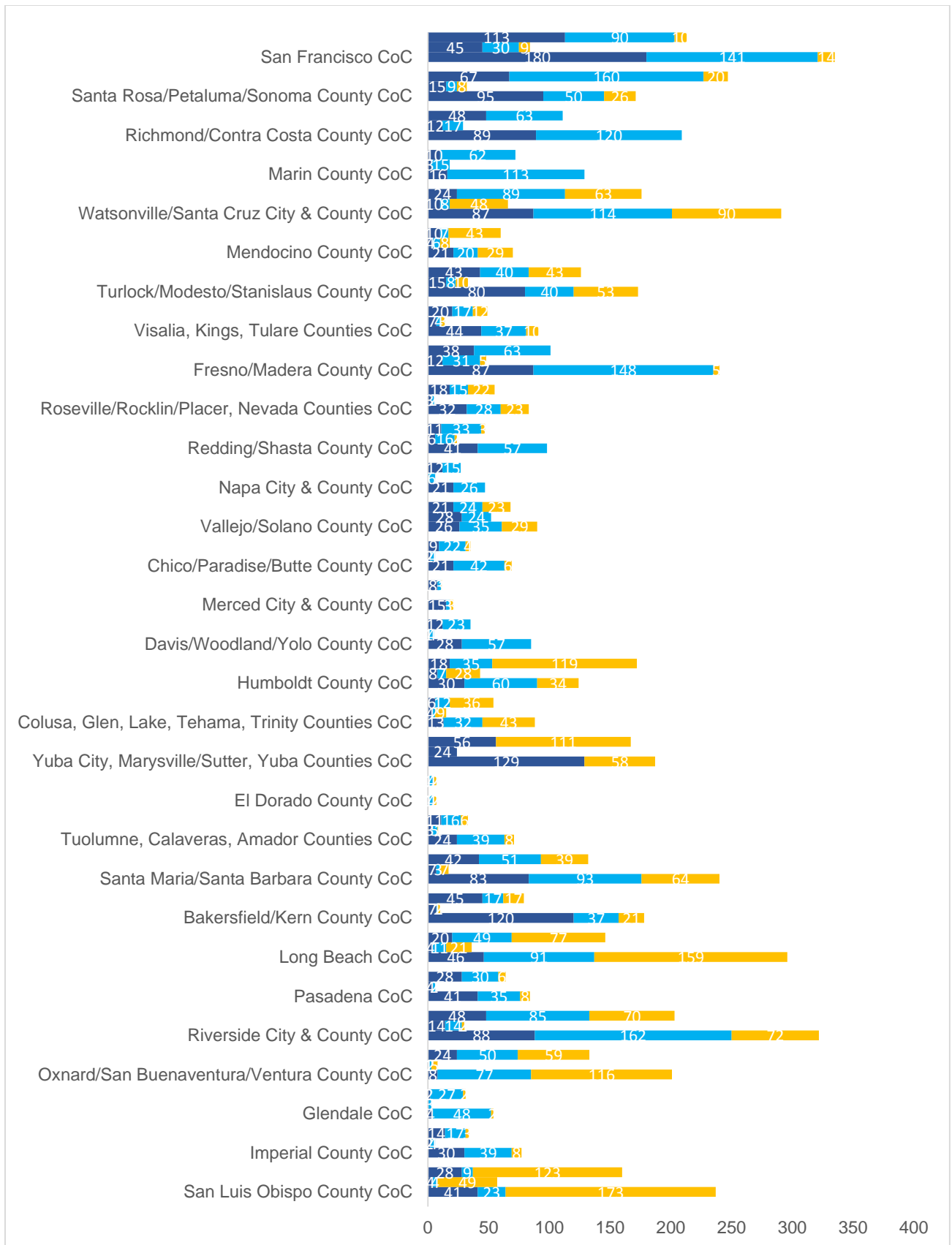
Of the 23,187 homeless adults and children living together in families in California, 6,850 were in emergency shelters, 10,808 were in transitional housing, and 5,529 were without shelter. Sixty-five percent of the persons in households with children were living in the ten continuum of cares San Jose/Santa Clara City & County CoC (886 adults and children), Oakland/Alameda County CoC (1,110 persons), Sacramento City & County CoC (766 adults and children), Salinas/Monterey, San Benito Counties CoC (676 adults and children), Stockton/San Joaquin County CoC (875 adults and children), Daly/San Mateo County CoC (661 adults and children), Los Angeles City & County CoC (6,229 adults and children), San Diego City and County CoC (2,007 adults and children), Santa Ana/Anaheim/Orange County CoC (1,272 adults and children), and San Bernardino City & County CoC (784 adults and children). Twenty-six percent of the homeless adults and children living together in families in California were living in the Los Angeles City & County CoC and another 8 percent were living in the San Diego City & County CoC. Five percent lived in the Santa Ana/Anaheim/Orange County CoC and four percent lived in the Oakland/Alameda County CoC.

Although 5,529 adult and children were living together in families without shelter in California, the Housing Inventory Count reports only 5,052 to 7,251 beds were available and not all of these beds may have been in available units. Overall, at least 1,658 to 2,233 additional beds are needed for families to ensure that there are enough beds in the places where they are needed. Evaluating the availability of beds for families in each continuum of care, more beds are needed in 12 to 16 of the CoCs.

About two-thirds of the additional beds are needed in five continuum of cares: Daly/San Mateo County CoC (at least 150 to 157 more beds needed), Humboldt County CoC (at least 167 more beds needed), Yuba City, Marysville/Sutter, Yuba Counties CoC (at least 160 more beds needed), Los Angeles City & County CoC (at least 324 to 611 more beds needed), and San Luis Obispo County CoC (at least 294 to 329 more beds needed).



HOMELESS CHILDREN, ADULTS, AND FAMILIES & NEEDED SHELTER BEDS – 2014



HOMELESS CHILDREN, ADULTS, AND FAMILIES & NEEDED SHELTER BEDS – 2014

| Continuum of Care | Adults and Children Without Shelter | Emergency Shelter Beds Available for Households With Children | Transitional Housing Beds Available for Households With Children | Permanent Supportive Housing Beds Available for Households With Children | Additional Beds Needed for Persons in Households With Children |
|---|-------------------------------------|---|--|--|--|
| San Jose/Santa Clara City & County CoC | 56 | 34 – 40 (14 – 18 DV) | 27 – 50 | 64 – 135 (10 – 18 DV) | 0 ¹ |
| San Francisco CoC | 33 | 19 – 27 (6 – 14 DV) | 51 | 33 – 103 | 0 ² |
| Oakland/Alameda County CoC | 218 | 72 – 104 (8 – 24 DV & 0 – 2V) | 142 – 145 (0 – 3 DV) | 96 | 0 |
| Sacramento City & County CoC | 5 | 87 – 105 (41 – 59 DV) | 15 – 17 | 75 (75 V) | 0 |
| Santa Rosa/Petaluma/Sonoma County CoC | 54 | 34 – 50 (18 – 20 DV) | 12 | 18 – 45 (19 – 29 V) | 0 ³ |
| Richmond/Contra Costa County CoC | 0 | 8 (7 DV) | 16 | 10 | 0 |
| Salinas/Monterey, San Benito Counties CoC | 281 | 35 (28 DV) | 98 – 108 | 104 – 112 | 26 – 44 |
| Marin County CoC | 0 | 0 | 7 – 8 (7 DV) | 0 – 6 | 0 |
| Watsonville/Santa Cruz City & County CoC | 201 | 37 – 40 (0 – 3 DV) | 10 | 7 – 15 (7 – 15 V) | 136 – 147 |
| Mendocino County CoC | 80 | 1 – 6 (1 – 5 DV) | 0 – 9 | 8 – 93 | 0 – 71 |
| Turlock/Modesto/Stanislaus County CoC | 106 | 2 – 16 | 0 – 4 | 9 – 14 (2 – 3 V) | 72 – 95 |
| Stockton/San Joaquin County CoC | 25 | 87 – 154 (12 - 17 DV) | 64 – 79 | 0 – 7 | 0 |
| Daly/San Mateo County CoC | 244 | 6 (1 DV) | 81 – 82 (10 DV) | 0 – 6 | 150 – 157 |
| Visalia, Kings, Tulare Counties CoC | 25 | 27 – 72 (3 – 13 DV) | 28 – 35 (22 V) | 27 – 59 (0 – 1 V) | 0 |
| Fresno/Madera County CoC | 10 | 63 – 83 (8 – 23 DV) | 44 – 45 (11 DV) | 46 – 118 (0 – 57 V) | 0 |
| Roseville/Rocklin/Placer, Nevada Counties CoC | 45 | 19 – 46 (16 – 33 DV) | 33 – 35 (8 – 10 DV) | 0 | 0 |
| Redding/Shasta County CoC | 5 | 6 | 9 – 11 | 0 | 0 |
| Napa City & County CoC | 0 | 9 (4 DV) | 12 | 0 | 0 |
| Vallejo/Solano County CoC | 52 | 57 – 87 (12 – 13 DV) | 55 – 63 (3 DV & 0 – 1 V) | 3 – 5 | 0 |
| Chico/Paradise/Butte County CoC | 10 | 0 – 28 (0 – 7 DV) | 4 (4 DV) | 0 – 19 (0 – 19 V) | 0 – 6 |
| Merced City & County CoC | 4 | 0 | 0 – 22 | 4 | 0 |

HOMELESS CHILDREN, ADULTS, AND FAMILIES & NEEDED SHELTER BEDS – 2014

| | | | | | |
|--|-------|---|--|---|------------------------------|
| Davis/Woodland/Yolo County CoC | 0 | 10 – 24 (0 – 8 DV) | 41 | 2 | 0 |
| Humboldt County CoC | 181 | 0 | 14 | 0 | 167 |
| Colusa, Glen, Lake, Tehama, Trinity Counties CoC | 88 | 2 – 4 | 18 – 20 (6 DV) | 0 | 64 – 68 |
| Yuba City, Marysville/Sutter, Yuba Counties CoC | 169 | 5 (5 DV & V) | 4 | 0 | 160 |
| El Dorado County CoC | 4 | 26 (26 DV) | 6 (4 DV) | 0 | 0 |
| Tuolumne, Calaveras, Amador Counties CoC | 15 | 24 – 34 (24 – 25 DV) | 8 – 11 (8 – 11 DV) | 0 | 0 |
| Los Angeles City & County CoC | 2,071 | 445 – 470 (159 – 184 DV) | 446 – 615 (241 – 282 DV & 0 – 10 V) | 547 – 640 (79 DV & 66 V) | 324 – 611 ⁴ |
| San Diego City and County CoC | 309 | 12 – 28 (12 – 28 DV) | 416 – 446 (95 – 96 DV & 7 V) | 33 – 344 (0 – 264 V) | 0 ⁵ |
| Santa Ana/Anaheim/Orange County CoC | 3 | 28 – 39 (23 – 34 DV) | 189 – 249 (65 – 76 DV) | 16 – 105 (10 – 90 V) | 0 ⁶ |
| Santa Maria/Santa Barbara County CoC | 110 | 16 – 17 (16 – 17 DV) | 17 – 18 (7 – 8 DV) | 9 | 66 – 68 |
| Bakersfield/Kern County CoC | 40 | 20 – 33 (20 – 33 DV) | 0 – 7 (0 – 7 DV) | 0 – 19 (0 – 13 V) | 0 – 20 |
| Long Beach CoC | 257 | 40 – 48 (8 – 16 DV) | 71 (17 DV) | 13 – 48 (0 – 35 V) | 90 – 133 |
| Pasadena CoC | 14 | 6 – 11 (0 – 5 DV) | 2 – 5 | 18 – 42 | 0 |
| Riverside City & County CoC | 144 | 40 – 99 (54 – 69 DV) | 171 – 218 | 1 – 36 | 0 |
| San Bernardino City & County CoC | 130 | 46 – 56 (38 – 45 DV & 0 – 1 V) | 45 – 79 (12 – 24 DV & 0 – 3 V) | 0 – 48 (0 – 40 V) | 0 – 39 |
| Oxnard/San Buenaventura/Ventura County CoC | 180 | 27 – 30 (9 – 12 DV) | 24 – 30 (8 DV) | 11 | 109 – 118 |
| Glendale CoC | 4 | 8 – 20 (6 DV) | 14 | 1 – 5 | 0 |
| Imperial County CoC | 11 | 24 – 29 | 11 | 0 | 0 |
| San Luis Obispo County CoC | 345 | 16 – 30 (9 – 13 DV) | 0 | 0 – 21 (0 – 21 V) | 294 – 329 |
| California Total | 5,529 | 1,398 – 1,925 (588 – 815 DV & 1 – 4 V) | 2,205 – 2,677 (506 – 587 DV & 29 – 43 V) | 1,155 – 2,252 (89 – 97 DV & 179 – 728 V) | 1,658 – 2,233 ¹⁻⁶ |

Notes:

V = Veteran bed

DV = Domestic Violence Bed

¹ Total reflects 20 – 23 RRH beds available for households with children

² Total reflects 48 DEM beds available for households with children

³ Total reflects 45 RRH beds available for households with children

⁴ Total reflects 22 OPH beds available for households with children

⁵ Total reflects 152 OPH beds available for households with children

⁶ Total reflects 7 OPH beds available for households with children

Homeless Populations

In California, 27 percent of the 113,952 persons homeless on a given night in January 2014 were chronically homeless. Also, 28 percent were characterized as severely mentally ill and 25 percent were characterized as having chronic substance abuse. Veterans comprised 10 percent of the homeless population, domestic violence survivors comprised 11 percent of the homeless population, and persons with HIV/AIDS comprised 2 percent of the homeless population.

| Homeless Populations in Shelters | | | | | | | |
|---|---------------------|-----------------------------|-----|-------------------------|----------|-----|-----|
| CoC Name | Chronic Individuals | Chronic Persons in Families | SMI | Chronic Substance Abuse | Veterans | HIV | DV |
| San Jose/Santa Clara City & County CoC | 263 | 13 | 415 | 269 | 234 | 11 | 224 |
| San Francisco CoC | 642 | 169 | 914 | 651 | 298 | 100 | 375 |
| Oakland/Alameda County CoC | 199 | 41 | 564 | 378 | 185 | 28 | 403 |
| Sacramento City & County CoC | 135 | 2 | 387 | 457 | 141 | 20 | 239 |
| Santa Rosa/Petaluma/Sonoma County CoC | 190 | 36 | 26 | 331 | 78 | 9 | 174 |
| Richmond/Contra Costa County CoC | 143 | 38 | 189 | 199 | 41 | 4 | 143 |
| Salinas/Monterey, San Benito Counties CoC | 144 | 85 | 148 | 215 | 77 | 2 | 109 |
| Marin County CoC | 18 | 0 | 110 | 152 | 34 | 12 | 115 |
| Watsonville/Santa Cruz City & County CoC | 57 | 9 | 215 | 61 | 50 | 5 | 65 |
| Mendocino County CoC | 19 | 4 | 31 | 37 | 6 | 2 | 33 |
| Turlock/Modesto/Stanislaus County CoC | 69 | 14 | 139 | 57 | 41 | 9 | 111 |
| Stockton/San Joaquin County CoC | 43 | 6 | 165 | 239 | 65 | 17 | 234 |
| Daly/San Mateo County CoC | 35 | 5 | 69 | 50 | 94 | 2 | 46 |
| Visalia, Kings, Tulare Counties CoC | 23 | 5 | 90 | 100 | 9 | 4 | 57 |
| Fresno/Madera County CoC | 22 | 0 | 62 | 98 | 85 | 5 | 30 |
| Roseville/Rocklin/Placer, Nevada Counties CoC | 44 | 13 | 74 | 41 | 13 | 0 | 67 |
| Redding/Shasta County CoC | 36 | 31 | 134 | 52 | 60 | 6 | 89 |
| Napa City & County CoC | 31 | 0 | 36 | 46 | 9 | 1 | 35 |
| Vallejo/Solano County CoC | 37 | 8 | 48 | 37 | 47 | 13 | 14 |
| Chico/Paradise/Butte County CoC | 43 | 6 | 56 | 78 | 40 | 0 | 25 |
| Merced City & County CoC | 13 | 0 | 15 | 12 | 11 | 1 | 8 |
| Davis/Woodland/Yolo County CoC | 29 | 5 | 57 | 93 | 11 | 1 | 50 |
| Humboldt County CoC | 5 | 5 | 74 | 44 | 43 | 0 | 0 |

HOMELESS CHILDREN, ADULTS, AND FAMILIES & NEEDED SHELTER BEDS – 2014

| | | | | | | | |
|--|-------|-----|-------|-------|-------|-------|-------|
| Colusa, Glen, Lake, Tehama, Trinity Counties CoC | 24 | 23 | 28 | 24 | 7 | 1 | 35 |
| Yuba City, Marysville/Sutter, Yuba Counties CoC | 0 | 0 | 132 | 10 | 67 | 0 | 0 |
| El Dorado County CoC | 35 | 0 | 27 | 48 | 2 | 0 | 2 |
| Tuolumne, Calaveras, Amador Counties CoC | 2 | 2 | 21 | 29 | 18 | 1 | 57 |
| Los Angeles City & County CoC | 1,295 | 76 | 1,827 | 1,540 | 1,182 | 305 | 1,196 |
| San Diego City and County CoC | 217 | 21 | 1,575 | 745 | 790 | 1,016 | 557 |
| Santa Ana/Anaheim/Orange County CoC | 130 | 11 | 167 | 149 | 129 | 36 | 467 |
| Santa Maria/Santa Barbara County CoC | 84 | 0 | 90 | 181 | 58 | 2 | 84 |
| Bakersfield/Kern County CoC | 29 | 2 | 74 | 203 | 66 | 4 | 49 |
| Long Beach CoC | 107 | 4 | 188 | 158 | 275 | 35 | 72 |
| Pasadena CoC | 43 | 29 | 51 | 33 | 3 | 2 | 47 |
| Riverside City & County CoC | 15 | 8 | 135 | 131 | 115 | 4 | 119 |
| San Bernardino City & County CoC | 57 | 12 | 47 | 15 | 35 | 8 | 261 |
| Oxnard/San Buenaventura/Ventura County CoC | 19 | 0 | 59 | 58 | 14 | 0 | 45 |
| Glendale CoC | 33 | 0 | 27 | 16 | 7 | 2 | 15 |
| Imperial County CoC | 24 | 16 | 2 | 1 | 0 | 0 | 36 |
| San Luis Obispo County CoC | 63 | 15 | 67 | 26 | 17 | 4 | 90 |
| California Total | 4,417 | 714 | 8,535 | 7,064 | 4,457 | 1,672 | 5,778 |

HOMELESS CHILDREN, ADULTS, AND FAMILIES & NEEDED SHELTER BEDS – 2014

| Homeless Populations Without Shelter | | | | | | | |
|--|------------------------|--------------------------------------|-------|-------------------------------|----------|-----|-----|
| CoC Name | Chronic Individuals | Chronic Persons in Families | SMI | Chronic Substance Abuse | Veterans | HIV | DV |
| San Jose/Santa Clara City & County CoC | 2,250 | 9 | 2,872 | 1,010 | 579 | 93 | 431 |
| San Francisco CoC | 1,494 | 16 | 1,629 | 1,292 | 422 | 308 | 234 |
| Oakland/Alameda County CoC | 760 | 94 | 629 | 935 | 353 | 72 | 655 |
| Sacramento City & County CoC | 285 | 0 | 326 | 470 | 136 | 24 | 284 |
| Santa Rosa/Petaluma/Sonoma County CoC | 1,029 | 5 | 1,057 | 991 | 343 | 30 | 84 |
| Richmond/Contra Costa County CoC | 573 | 21 | 204 | 188 | 135 | 10 | 225 |
| Salinas/Monterey, San Benito Counties CoC | 781 | 79 | 1,062 | 266 | 161 | 12 | 19 |
| Marin County CoC | 44 | 0 | 25 | 27 | 18 | 1 | 33 |
| Watsonville/Santa Cruz City & County CoC | 883 | 32 | 1,476 | 785 | 343 | 29 | 99 |
| Mendocino County CoC | 148 | 50 | 126 | 141 | 40 | 2 | 24 |
| Turlock/Modesto/Stanislaus County CoC | 54 | 9 | 171 | 122 | 28 | 4 | 111 |
| Stockton/San Joaquin County CoC | 64 | 3 | 46 | 46 | 22 | 0 | 4 |
| Daly/San Mateo County CoC | 686 | 171 | 440 | 869 | 131 | 26 | 195 |
| Visalia, Kings, Tulare Counties CoC | 185 | 22 | 109 | 127 | 27 | 9 | 74 |
| Fresno/Madera County CoC | 475 | 0 | 338 | 279 | 187 | 15 | 512 |
| Roseville/Rocklin/Placer, Nevada Counties CoC | 167 | 16 | 168 | 197 | 60 | 6 | 142 |
| Redding/Shasta County CoC | 53 | 5 | 52 | 11 | 2 | 0 | 7 |
| Napa City & County CoC | 42 | 0 | 40 | 33 | 14 | 2 | 19 |
| Vallejo/Solano County CoC | 189 | 116 | 75 | 39 | 33 | 9 | 70 |
| Chico/Paradise/Butte County CoC | 264 | 0 | 103 | 79 | 55 | 1 | 10 |
| Merced City & County CoC | 351 | 0 | 236 | 200 | 73 | 18 | 188 |
| Davis/Woodland/Yolo County CoC | 97 | 0 | 44 | 76 | 20 | 0 | 43 |
| Humboldt County CoC | 127 | 123 | 94 | 76 | 80 | 3 | 154 |
| Colusa, Glen, Lake, Tehama, Trinity Counties CoC | 199 | 19 | 87 | 40 | 42 | 0 | 89 |
| Yuba City, Marysville/Sutter, Yuba Counties CoC | 36 | 17 | 24 | 21 | 8 | 1 | 12 |
| El Dorado County CoC | 36 | 2 | 9 | 13 | 1 | 0 | |
| Tuolumne, Calaveras, Amador Counties CoC | 110 | 0 | 33 | 74 | 28 | 0 | 60 |

HOMELESS CHILDREN, ADULTS, AND FAMILIES & NEEDED SHELTER BEDS – 2014

| | | | | | | | |
|--|--------|-------|--------|--------|-------|-------|-------|
| Los Angeles City & County CoC | 6,652 | 859 | 7,151 | 9,281 | 2,557 | 185 | 1903 |
| San Diego City and County CoC | 939 | 68 | 1,833 | 1,235 | 517 | 52 | 842 |
| Santa Ana/Anaheim/Orange County CoC | 668 | 5 | 376 | 753 | 269 | 27 | |
| Santa Maria/Santa Barbara County CoC | 436 | 98 | 143 | 325 | 76 | 3 | 147 |
| Bakersfield/Kern County CoC | 139 | 8 | 91 | 233 | 21 | 6 | 26 |
| Long Beach CoC | 877 | 82 | 476 | 376 | 164 | 28 | 101 |
| Pasadena CoC | 149 | 0 | 113 | 78 | 38 | 9 | 72 |
| Riverside City & County CoC | 995 | 75 | 452 | 506 | 181 | 18 | 326 |
| San Bernardino City & County CoC | 433 | 49 | 258 | 277 | 132 | 15 | 202 |
| Oxnard/San Buenaventura/Ventura County CoC | 388 | 33 | 255 | 242 | 88 | 14 | 201 |
| Glendale CoC | 46 | 0 | 27 | 32 | 12 | 2 | 15 |
| Imperial County CoC | 87 | 0 | 6 | 3 | 7 | 0 | 2 |
| San Luis Obispo County CoC | 592 | 78 | 1,024 | 278 | 236 | 0 | 52 |
| California Total | 23,783 | 2,164 | 23,680 | 22,026 | 7,639 | 1,034 | 7,667 |

Chronically Homeless Persons

Of the 113,952 homeless people in California, 31,078 were chronically homeless. Eighty-three percent of the chronically homeless persons were without shelter: 23,783 individuals and 2,164 persons in families.

Half of the chronically homeless individuals without shelter were in five continuum of care areas: San Jose/Santa Clara City & County CoC (2,250 individuals), San Francisco CoC (1,494 individuals), Santa Rosa/Petaluma/Sonoma County CoC (1,029 individuals), Los Angeles City & County CoC (6,652 individuals), and Riverside City & County CoC (995 individuals). The Housing Inventory Count reports between 5,486 and 7,066 rapid rehousing, transitional housing, permanent housing, and safe haven beds. Between 16,751 and 18,305 more transitional housing, permanent housing, and rapid-rehousing beds may be needed for chronically homeless individuals. Almost half of the beds are needed in the five continuum of care areas where the greatest number of chronically homeless individuals living without shelter are residing.

| CoC Name | Chronically Homeless Individuals Without Shelter | Transitional Housing Beds Available for Households Without Children | Permanent Supportive Housing Beds Available for Households Without Children | Additional Beds Needed for Chronically Homeless Individuals |
|---|--|---|---|---|
| San Jose/Santa Clara City & County CoC | 2,250 | 73 – 96 (30 V) | 419 – 490 (0 – 8 DV) | 1,656 - 1,753 ¹ |
| San Francisco CoC | 1,494 | 12 (10 V) | 295 – 365 (37 V) | 1,117 - 1,187 |
| Oakland/Alameda County CoC | 760 | 48 – 51 (0 – 3 DV) | 183 (25 V) | 516 - 519 ² |
| Sacramento City & County CoC | 285 | 29 (4 V) | 26 (12 V) | 230 |
| Santa Rosa/Petaluma/Sonoma County CoC | 1,029 | 19 (1 V) | 15 – 42 (15 – 25 V) | 960 - 987 ³ |
| Richmond/Contra Costa County CoC | 573 | 0 | 19 | 554 |
| Salinas/Monterey, San Benito Counties CoC | 781 | 13 – 23 | 18 – 26 | 732 – 750 |
| Marin County CoC | 44 | 15 – 16 (8 V) | 19 – 25 (1 V) | 3 – 10 |
| Watsonville/Santa Cruz City & County CoC | 883 | 3 | 20 – 28 (20 – 28 V) | 852 – 860 |
| Mendocino County CoC | 148 | 9 – 18 | 0 – 85 | 45 – 139 |
| Turlock/Modesto/Stanslaus County CoC | 54 | 11 – 15 (3 V) | 2 – 7 (3 – 4 V) | 32 – 41 |
| Stockton/San Joaquin County CoC | 64 | 33 – 48 (14 V) | 7 | 9 – 24 |
| Daly/San Mateo County CoC | 686 | 18 – 19 (3 V) | 10 – 16 | 651 – 658 |
| Visalia, Kings, Tulare Counties CoC | 185 | 51 – 55 | 18 – 50 (0 – 1 V) | 80 – 116 |
| Fresno/Madera County CoC | 475 | 16 – 17 (1 DV & 4 V) | 69 – 141 (45 – 102 V) | 316 – 389 ⁴ |

HOMELESS CHILDREN, ADULTS, AND FAMILIES & NEEDED SHELTER BEDS – 2014

| | | | | |
|--|--------|---------------------------------------|--|--------------------------------|
| Roseville/Rocklin/Placer, Nevada Counties CoC | 167 | 0 – 2 (0 – 2 DV) | 2 | 163 – 165 |
| Redding/Shasta County CoC | 53 | 38 – 40 (6 – 8 V) | 0 | 13 – 15 |
| Napa City & County CoC | 42 | 0 | 0 | 42 |
| Vallejo/Solano County CoC | 189 | 18 – 26 (4 – 7 V) | 9 – 11 | 145 – 155 ⁵ |
| Chico/Paradise/Butte County CoC | 264 | 5 (2 V) | 7 – 26 (0 – 19 V) | 233 – 252 |
| Merced City & County CoC | 351 | 28 – 50 | 13 | 288 – 310 |
| Davis/Woodland/Yolo County CoC | 97 | 2 | 0 | 95 |
| Humboldt County CoC | 127 | 13 | 0 | 114 |
| Colusa, Glen, Lake, Tehama, Trinity Counties CoC | 199 | 4 – 6 | 0 | 193 – 195 |
| Yuba City, Marysville/Sutter, Yuba Counties CoC | 36 | 4 | 0 | 32 |
| El Dorado County CoC | 36 | 0 | 0 | 36 |
| Tuolumne, Calaveras, Amador Counties CoC | 110 | 0 – 3 (0 – 3 DV) | 1 | 106 – 109 |
| Los Angeles City & County CoC | 6,652 | 741 – 915 (0 – 38 DV & 194 – 299 V) | 2,195 – 2,303 (1,010 V) | 3,418 – 3,700 ⁶ |
| San Diego City and County CoC | 939 | 199 – 229 (0 – 1 DV & 54 – 57 V) | 173 – 484 (50 – 314 V) | 217 – 558 ⁷ |
| Santa Ana/Anaheim/Orange County CoC | 668 | 45 – 105 (0 – 11 DV & 9 V) | 20 – 109 (1 – 81 V) | 454 – 603 |
| Santa Maria/Santa Barbara County CoC | 436 | 22 – 23 (0 – 1 DV & 15 V) | 67 | 346 – 347 |
| Bakersfield/Kern County CoC | 139 | 41 – 48 (0 – 7 DV & 10 V) | 137 – 156 (26 – 39 V) | 0 |
| Long Beach CoC | 877 | 96 (92 V) | 11 – 46 (11 – 46 V) | 728 – 763 ⁸ |
| Pasadena CoC | 149 | 0 – 3 | 2 – 26 | 120 – 147 |
| Riverside City & County CoC | 995 | 17 – 64 (1 V) | 30 – 65 (2 V) | 866 – 948 |
| San Bernardino City & County CoC | 433 | 2 – 36 (0 – 12 DV & 0 – 3 V) | 4 – 52 (4 – 44 V) | 345 – 427 |
| Oxnard/San Buenaventura/Ventura County CoC | 388 | 21 – 27 (1 V) | 4 (3 V) | 357 – 363 |
| Glendale CoC | 46 | 0 | 0 – 4 | 42 – 46 |
| Imperial County CoC | 87 | 0 | 0 | 87 |
| San Luis Obispo County CoC | 592 | 0 | 13 – 34 | 558 – 579 |
| California Total | 23,783 | 1,646 – 2,118 (1 – 79 DV & 465 – 581) | 3,808 – 4,913 (0 – 8 DV & 1,265 – 1,793) | 16,751 – 18,305 ¹⁻⁸ |

Notes:

V = Veteran bed

DV = Domestic Violence Bed

¹ Total reflects 1 SH bed and 4 to 7 RRH beds (4-7 V) available for households without children

² Total reflects 10 SH beds available for households without children

³ Total reflects 8 OPH beds available for households without children

⁴ Total reflects 1 SH bed available for households without children

⁵ Total reflects 7 RRH beds available for households without children

⁶ Total reflects 4 SH beds and 12 OPH beds available for households without children

⁷ Total reflects 8 SH beds (0 to 2 V) and 1 (1 V) OPH bed available for households without children

⁸ Total reflects 7 SH beds available for households without children

About two-thirds of the chronically homeless persons in families without shelter were in five continuum of care areas: Daly/San Mateo City & County CoC (171 individuals), Vallejo/Solano County CoC (116 individuals), Humboldt County CoC (123 individuals), Los Angeles City & County CoC (859 individuals), and Santa Maria/Santa Barbara County CoC (98 individuals). The Housing Inventory Count reports between 5,486 and 7,066 rapid rehousing, transitional housing, permanent housing, and safe haven beds. Depending on the number of available beds in available units for families, at least 3,654 and 5,226 more transitional housing, permanent housing, and rapid-rehousing beds may be needed for chronically homeless persons in families. Assuming all of the available beds are in available units, additional beds for chronically homeless persons in families are needed in between 7 and 11 of the CoCs.

| CoC Name | Chronically Homeless Persons in Families Without Shelter | Transitional Housing Beds Available for Households With Children | Permanent Supportive Housing Beds Available for Households With Children | Additional Beds Needed for Chronically Homeless Persons in Families |
|---|--|--|--|---|
| San Jose/Santa Clara City & County CoC | 9 | 27 – 50 | 64 – 135 (10 – 18 DV) | 0 ¹ |
| San Francisco CoC | 16 | 51 | 33 – 103 | 0 ² |
| Oakland/Alameda County CoC | 94 | 142 – 145 (0 – 3 DV) | 96 | 0 |
| Sacramento City & County CoC | 0 | 15 – 17 | 75 (75 V) | 0 |
| Santa Rosa/Petaluma/Sonoma County CoC | 5 | 12 | 18 – 45 (19 – 29 V) | 0 ³ |
| Richmond/Contra Costa County CoC | 21 | 16 | 10 | 0 |
| Salinas/Monterey, San Benito Counties CoC | 79 | 98 – 108 | 104 – 112 | 0 |
| Marin County CoC | 0 | 7 – 8 (7 DV) | 0 – 6 | 0 |
| Watsonville/Santa Cruz City & County CoC | 32 | 10 | 7 – 15 (7 – 15 V) | 7 – 15 |
| Mendocino County CoC | 50 | 0 – 9 | 8 – 93 | 0 – 42 |
| Turlock/Modesto/Stanislaus County CoC | 9 | 0 – 4 | 9 – 14 (2 – 3 V) | 0 |
| Stockton/San Joaquin County CoC | 3 | 64 – 79 | 0 – 7 | 0 |
| Daly/San Mateo County CoC | 171 | 81 – 82 (10 DV) | 0 – 6 | 83 – 90 |
| Visalia, Kings, Tulare Counties CoC | 22 | 28 – 35 (22 V) | 27 – 59 (0 – 1 V) | 0 |
| Fresno/Madera County CoC | 0 | 44 – 45 (11 DV) | 46 – 118 (0 – 57 V) | 0 |
| Roseville/Rocklin/Placer, Nevada Counties CoC | 16 | 33 – 35 (8 – 10 DV) | 0 | 0 |

HOMELESS CHILDREN, ADULTS, AND FAMILIES & NEEDED SHELTER BEDS – 2014

| | | | | |
|--|-------|--|--|--------------------------|
| Redding/Shasta County CoC | 5 | 9 – 11 | 0 | 0 |
| Napa City & County CoC | 0 | 12 | 0 | 0 |
| Vallejo/Solano County CoC | 116 | 55 – 63 (3 DV & 0 – 1 V) | 3 – 5 | 48 – 58 |
| Chico/Paradise/Butte County CoC | 0 | 4 (4 DV) | 0 – 19 (0 – 19 V) | 0 |
| Merced City & County CoC | 0 | 0 – 22 | 4 | 0 |
| Davis/Woodland/Yolo County CoC | 0 | 41 | 2 | 0 |
| Humboldt County CoC | 123 | 14 | 0 | 109 |
| Colusa, Glen, Lake, Tehama, Trinity Counties CoC | 19 | 18 – 20 (6 DV) | 0 | 0 – 1 |
| Yuba City, Marysville/Sutter, Yuba Counties CoC | 17 | 4 | 0 | 13 |
| El Dorado County CoC | 2 | 6 (4 DV) | 0 | 0 |
| Tuolumne, Calaveras, Amador Counties CoC | 0 | 8 – 11 (8 – 11 DV) | 0 | 0 |
| Los Angeles City & County CoC | 859 | 446 – 615 (241 – 282 DV & 0 – 10 V) | 547 – 640 (79 DV & 66 V) | 0 ⁴ |
| San Diego City and County CoC | 68 | 416 – 446 (95 – 96 DV & 7 V) | 33 – 344 (0 – 264 V) | 0 ⁵ |
| Santa Ana/Anaheim/Orange County CoC | 5 | 189 – 249 (65 – 76 DV) | 16 – 105 (10 – 90 V) | 0 ⁶ |
| Santa Maria/Santa Barbara County CoC | 98 | 17 – 18 (7 – 8 DV) | 9 | 71 – 72 |
| Bakersfield/Kern County CoC | 8 | 0 – 7 (0 – 7 DV) | 0 – 19 (0 – 13 V) | 0 – 8 |
| Long Beach CoC | 82 | 71 (17 DV) | 13 – 48 (0 – 35 V) | 0 |
| Pasadena CoC | 0 | 2 – 5 | 18 – 42 | 0 |
| Riverside City & County CoC | 75 | 171 – 218 | 1 – 36 | 0 |
| San Bernardino City & County CoC | 49 | 45 – 79 (12 – 24 DV & 0 – 3 V) | 0 – 48 (0 – 40 V) | 0 – 4 |
| Oxnard/San Buenaventura/Ventura County CoC | 33 | 24 – 30 (8 DV) | 11 | 0 |
| Glendale CoC | 0 | 14 | 1 – 5 | 0 |
| Imperial County CoC | 0 | 11 | 0 | 0 |
| San Luis Obispo County CoC | 78 | 0 | 0 – 21 (0 – 21 V) | 57 – 78 |
| California Total | 2,164 | 2,205 – 2,677 (506 – 587 DV & 29 – 43 V) | 1,155 – 2,252 (89 – 97 DV & 179 – 728 V) | 388 – 490 ¹⁻⁶ |

Notes:

V = Veteran bed

DV = Domestic Violence Bed

¹ Total reflects 20 – 23 RRH beds available for households with children

² Total reflects 48 DEM beds available for households with children

³ Total reflects 45 RRH beds available for households with children

⁴ Total reflects 22 OPH beds available for households with children

⁵ Total reflects 152 OPH beds available for households with children

⁶ Total reflects 7 OPH beds available for households with children

Domestic Violence Survivors

Of the 113,952 homeless people in California, 12,976 were escaping domestic violence. Fifty-nine percent of the domestic violence survivors were without shelter.

Fifty-six percent of the domestic violence survivors without shelter were in five continuum of care areas: San Jose/Santa Clara City & County CoC (431 individuals), Oakland/Alameda County CoC (655 individuals), Fresno/Madera County CoC (512 individuals), Los Angeles City & County CoC (1,903 individuals), and San Diego City & County CoC (842 individuals). The Housing Inventory Count reports between 60 and 375 domestic violence beds and rapid rehousing beds for households without children and between 1,296 and 1,615 domestic violence and rapid rehousing beds for households with children. Between 5,914 and 6,452 more transitional housing, permanent housing, and rapid-rehousing beds may be needed for adults and children escaping domestic violence. Half of the beds are needed in the five continuum of care areas where the greatest number of domestic violence survivors without shelter are residing.

| CoC Name | Households Without Children Households With Children | | | | | | | Additional Beds Needed for Domestic Violence Survivors |
|---|---|------------|------------|-------------|------------|------------|-------------|--|
| | DV Survivors w/o shelter | ES Beds | TH Beds | PSH Beds | ES Beds | TH Beds | PSH Beds | |
| San Jose/Santa Clara City & County CoC | 431 | 0 – 4 | 0 | 0 – 8 | 14 - 18 | 0 | 10 – 18 | 353 - 383 ¹ |
| San Francisco CoC | 234 | 0 – 8 | 0 | 0 | 6 - 14 | 0 | 0 | 164 - 180 ² |
| Oakland/Alameda County CoC | 655 | 0 – 16 | 0 – 3 | 0 | 8 - 24 | 0 - 3 | 0 | 609 - 647 |
| Sacramento City & County CoC | 284 | 0 – 18 | 0 | 0 | 41 - 59 | 0 | 0 | 207 – 243 |
| Santa Rosa/Petaluma/Sonoma County CoC | 84 | 5 – 7 | 0 | 0 | 18 - 20 | 0 | 0 | 12 – 16 ³ |
| Richmond/Contra Costa County CoC | 225 | 0 | 0 | 0 | 7 | 0 | 0 | 218 |
| Salinas/Monterey, San Benito Counties CoC | 19 | 0 | 0 | 0 | 28 | 0 | 0 | 0 |
| Marin County CoC | 33 | 0 | 0 | 0 | 0 | 7 | 0 | 26 |
| Watsonville/Santa Cruz City & County CoC | 99 | 0 – 3 | 0 | 0 | 0 - 3 | 0 | 0 | 93 – 99 |
| Mendocino County CoC | 24 | 0 – 4 | 0 | 0 | 1 - 5 | 0 | 0 | 15 – 23 |

HOMELESS CHILDREN, ADULTS, AND FAMILIES & NEEDED SHELTER BEDS – 2014

| | | | | | | | | |
|--|------|------------|--------|---|--------------|--------------|----|----------------------|
| Turlock/Modesto/ Stanislaus County CoC | 111 | 0 | 0 | 0 | 0 | 0 | 0 | 111 |
| Stockton/San Joaquin County CoC | 4 | 0 – 5 | 0 | 0 | 12 - 17 | 0 | 0 | 0 |
| Daly/San Mateo County CoC | 195 | 0 | 0 | 0 | 1 | 10 | 0 | 184 |
| Visalia, Kings, Tulare Counties CoC | 74 | 0 – 10 | 0 | 0 | 3 - 13 | 0 | 0 | 51 – 71 |
| Fresno/Madera County CoC | 512 | 15 – 29 | 1 | 0 | 8 - 23 | 11 | 0 | 448 - 477 |
| Roseville/Rocklin/ Placer, Nevada Counties CoC | 142 | 0 – 17 | 0 – 2 | 0 | 16 - 33 | 8 - 10 | 0 | 80 – 118 |
| Redding/Shasta County CoC | 7 | 0 | 0 | 0 | 0 | 0 | 0 | 7 |
| Napa City & County CoC | 19 | 0 | 0 | 0 | 4 | 0 | 0 | 15 |
| Vallejo/Solano County CoC | 70 | 0 – 1 | 0 | 0 | 12 - 13 | 3 | 0 | 46 – 48 ⁴ |
| Chico/Paradise/Butte County CoC | 10 | 0 – 7 | 0 | 0 | 0 - 7 | 4 | 0 | 0 – 6 |
| Merced City & County CoC | 188 | 0 | 0 | 0 | 0 | 0 | 0 | 188 |
| Davis/Woodland/Yolo County CoC | 43 | 0 – 8 | 0 | 0 | 0 - 8 | 0 | 0 | 27 – 43 |
| Humboldt County CoC | 154 | 0 | 0 | 0 | 0 | 0 | 0 | 154 |
| Colusa, Glen, Lake, Tehama, Trinity Counties CoC | 89 | 0 | 0 | 0 | 0 | 6 | 0 | 83 |
| Yuba City, Marysville/Sutter, Yuba Counties CoC | 12 | 0 | 0 | 0 | 5 | 0 | 0 | 7 |
| El Dorado County CoC | 0 | 0 | 0 | 0 | 26 | 4 | 0 | 0 |
| Tuolumne, Calaveras, Amador Counties CoC | 60 | 0 – 1 | 0 – 3 | 0 | 24 - 25 | 8 - 11 | 0 | 20 – 28 |
| Los Angeles City & County CoC | 1903 | 1 – 26 | 0 – 38 | 0 | 159 - 184 | 241 - 282 | 79 | 1,294 - 1,423 |
| San Diego City and County CoC | 842 | 3 – 19 | 0 – 1 | 0 | 12 - 28 | 95 - 96 | 0 | 698 – 732 |
| Santa Ana/Anaheim/Orange County CoC | 0 | 6 – 17 | 0 – 11 | 0 | 23 - 34 | 65 - 76 | 0 | 0 |
| Santa Maria/Santa Barbara County CoC | 147 | 0 – 1 | 0 – 1 | 0 | 16 - 17 | 7 - 8 | 0 | 120 – 124 |
| Bakersfield/Kern County CoC | 26 | 0 – 13 | 0 – 7 | 0 | 20 - 33 | 0 - 7 | 0 | 0 – 6 |
| Long Beach CoC | 101 | 0 – 8 | 0 | 0 | 8 - 16 | 17 | 0 | 60 – 76 |
| Pasadena CoC | 72 | 0 – 5 | 0 | 0 | 0 - 5 | 0 | 0 | 62 – 72 |

HOMELESS CHILDREN, ADULTS, AND FAMILIES & NEEDED SHELTER BEDS – 2014

| | | | | | | | | |
|---|------|----------|--------|-------|-----------|-----------|---------|------------------------------|
| Riverside City & County CoC | 326 | 12 – 27 | 0 | 0 | 54 - 69 | 0 | 0 | 230 – 260 |
| San Bernardino City & County CoC | 202 | 0 – 7 | 0 – 12 | 0 | 38 - 45 | 12 - 24 | 0 | 114 – 152 |
| Oxnard/San Buenaventura/ Ventura County CoC | 201 | 4 – 7 | 0 | 0 | 9 - 12 | 8 | 0 | 174 – 180 |
| Glendale CoC | 15 | 0 | 0 | 0 | 6 | 0 | 0 | 9 |
| Imperial County CoC | 2 | 0 | 0 | 0 | 0 | 0 | 0 | 2 |
| San Luis Obispo County CoC | 52 | 2 – 6 | 0 | 0 | 9 - 13 | 0 | 0 | 33 – 41 |
| California Total | 7667 | 48 – 274 | 1 – 79 | 0 – 8 | 588 - 815 | 506 - 587 | 89 – 97 | 5,914 - 6,452 ¹⁻⁴ |

Notes: El Dorado County CoC and Santa Ana/Anaheim/Orange County CoC did not report data on the number of domestic violence survivors without shelter.

¹ Total reflects 20 – 23 RRH beds available for households with children and 4 to 7 RRH beds (4-7 V) available for households without children

² Total reflects 48 DEM beds available for households with children

³ Total reflects 45 RRH beds available for households with children

⁴ Total reflects 7 RRH beds available for households without children

Conclusion

In California, there were 113,952 homeless persons and 71,437 persons without shelter. At least 1,526 to 1,558 additional beds are needed for children living alone without shelter, 8,848 to 8,985 additional beds are needed for young adults alone without shelter, 46,172 to 48,278 additional beds are needed for adult individuals without shelter, and 1,658 to 2,233 additional beds are needed for adults and children in families without shelter. At least 16,751 to 18,305 additional beds are needed for chronically homeless individuals, 3,654 to 5,226 additional beds are needed for chronically homeless persons in families, and 5,914 and 6,452 additional domestic violence beds are needed. Additional shelters or beds are needed in all forty California CoCs.