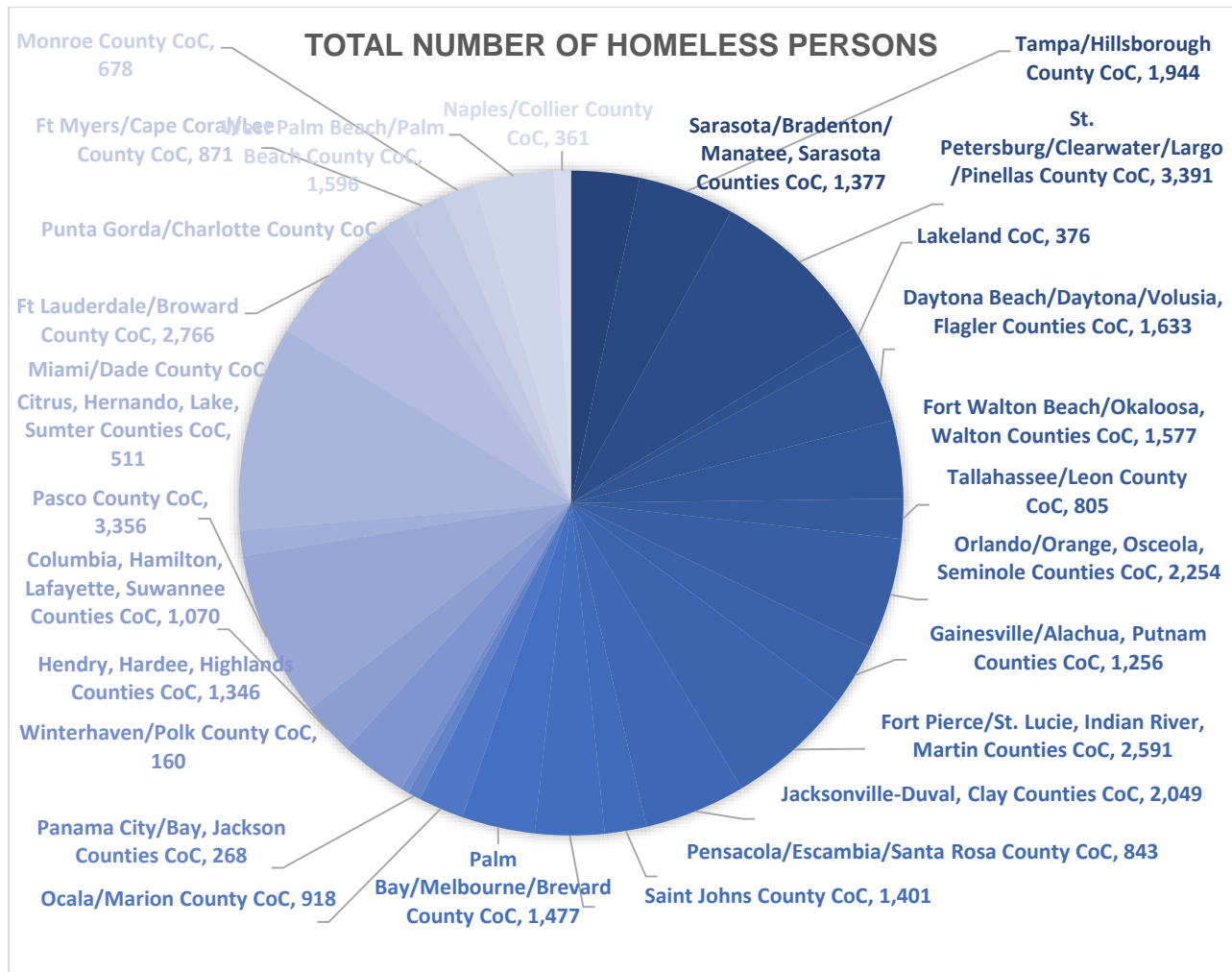


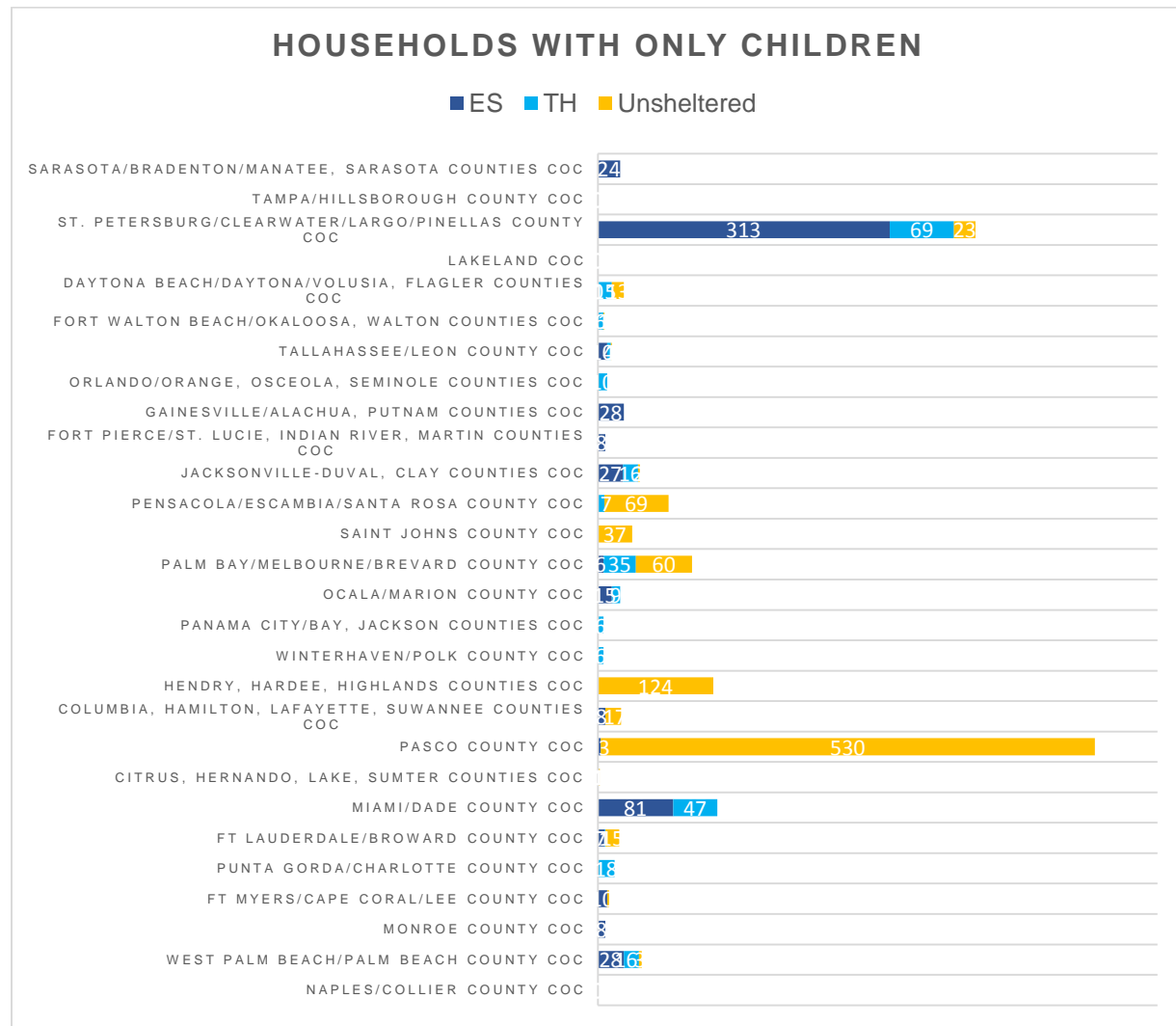
FLORIDA

In Florida, there were 41,542 homeless persons on a given night in January 2014. As the figure shows, one-third of the total number were located in five of Florida's twenty-eight CoCs: 4,156 were in the Miami/Dade County CoC, 3,356 were in the Pasco County CoC, 3,391 were in the St. Petersburg/Clearwater/Largo/Pinellas County CoC, 2,766 were in Ft Lauderdale/Broward County CoC, and 2,591 were in the Fort Pierce/St. Lucie, Indian River, Martin Counties CoC. There were 1,740 children alone, 12,812 persons in households with children, 2,426 young adults ages 18 to 24 alone, and 24,564 adults ages 24 and older alone. Fifty-two percent of the homeless persons in Florida were without shelter.



Children Alone

Of the 1,740 children alone, 30 percent were in the Pasco County CoC. Seventy-four percent of the homeless children living alone were in five counties: St. Petersburg/Clearwater/Largo/Pinellas County CoC (405 children), Palm Bay/Melbourne/Brevard County CoC (101 children), Hendry, Hardee, Highlands Counties CoC (124 children), Pasco County CoC (533 children), and Miami/Dade County CoC (128 children). Of the 1,740 children alone, 577 were in emergency shelters, 265 children were in transitional housing, and 898 were without shelter.



Fifty-one percent of the children living alone in Florida were without shelter. Of the 898 children living alone without shelter, 59 percent were in the Pasco County CoC. Ninety-three percent of the children living alone without shelter were located in five CoCs: Pensacola/Escambia/Santa Rosa County CoC (69 children), Saint Johns County CoC (37 children), Palm Bay/Melbourne/Brevard County CoC (60 children), Hendry, Hardee, Highlands Counties CoC (124 children), and Pasco County CoC (530 children).

HOMELESS CHILDREN, ADULTS, AND FAMILIES & NEEDED SHELTER BEDS – 2014

Continuum of Care	Children Alone Without Shelter	Emergency Shelter Youth Beds Available for Children Alone	Transitional Housing Youth Beds Available for Children Alone	Permanent Supportive Housing Beds Available for Children Alone	Additional Beds Needed for Children Alone
Sarasota/Bradenton/Manatee, Sarasota Counties CoC	0	10	11	0	0
Tampa/Hillsborough County CoC	0	0	0	0	0
St. Petersburg/Clearwater/Largo/Pinellas County CoC	23	0	0	0	23
Lakeland CoC	0	0	0	0	0
Daytona Beach/Daytona/Volusia, Flagler Counties CoC	13	0	0	0	13
Fort Walton Beach/Okaloosa, Walton Counties CoC	1	0	2	0	0
Tallahassee/Leon County CoC	1	8	2	0	0
Orlando/Orange, Osceola, Seminole Counties CoC	0	8	36	0	0
Gainesville/Alachua, Putnam Counties CoC	0	8	0	0	0
Fort Pierce/St. Lucie, Indian River, Martin Counties CoC	0	4	0	0	0
Jacksonville-Duval, Clay Counties CoC	2	0	0	0	2
Pensacola/Escambia/Santa Rosa County CoC	69	0	5	0	64
Saint Johns County CoC	37	0	0	0	37
Palm Bay/Melbourne/Brevard County CoC	60	20	7	0	33
Ocala/Marion County CoC	0	15	3	0	0
Panama City/Bay, Jackson Counties CoC	0	0	2	0	0
Winterhaven/Polk County CoC	0	0	6	0	0
Hendry, Hardee, Highlands Counties CoC	124	0	0	0	124
Columbia, Hamilton, Lafayette, Suwannee Counties CoC	17	4	0	0	13
Pasco County CoC	530	1	0	0	529
Citrus, Hernando, Lake, Sumter Counties CoC	1	0	0	0	1
Miami/Dade County CoC	0	12	0	0	0
Ft Lauderdale/Broward County CoC	15	0	2	0 - 2	11 – 13
Punta Gorda/Charlotte County CoC	0	0	4	0	0
Ft Myers/Cape Coral/Lee County CoC	2	0	0	0	2
Monroe County CoC	0	0	0	0	0

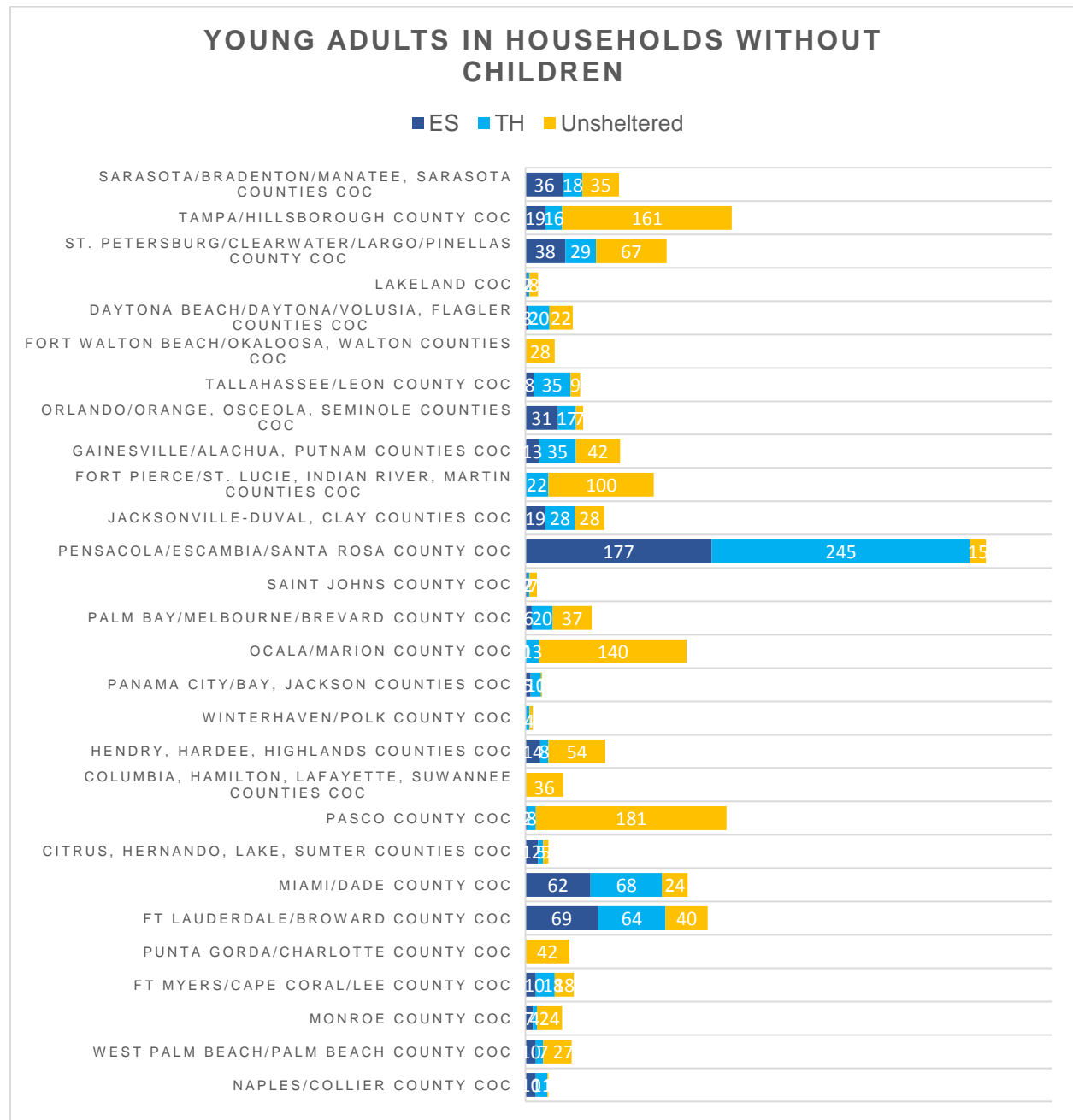
HOMELESS CHILDREN, ADULTS, AND FAMILIES & NEEDED SHELTER BEDS – 2014

West Palm Beach/Palm Beach County CoC	3	3	1	0	0
Naples/Collier County CoC	0	23	0	0	0
Florida Total	898	116	81	0 – 2	852 – 854

The Housing Inventory Count reports only 197 to 199 youth beds available for children alone without shelter. When evaluating the number of beds needed in each CoC, a total of 852 to 854 additional beds are needed for children living alone without shelter in Florida. Approximately 92 percent of the additional beds are needed in the five CoCs with the greatest number of children alone without shelter: Pensacola/Escambia/Santa Rosa County CoC, Saint Johns County CoC, Palm Bay/Melbourne/Brevard County CoC, Henry, Hardee, Highlands Counties CoC, and Pasco County CoC. Approximately 62 percent of the additional beds are needed in Pasco County CoC alone.

Young Adults Alone

Of the 2,426 young adults living alone in Florida, 555 were in emergency shelters, 709 were in transitional housing, and 1,162 were without shelter. Forty-seven percent of the young adults were living in the five continuum of cares Tampa/Hillsborough County CoC (196 individuals), Pensacola/Escambia/Santa Rosa County CoC (437 individuals), Pasco County CoC (191 individuals), Miami/Dade County CoC (154 individuals), and Ft Lauderdale/Broward County CoC (173 individuals).



Forty-seven percent of the young adults living alone in Florida were without shelter. Of the 1,162 young adults living alone without shelter, 55 percent were located in five CoCs: Tampa/Hillsborough County CoC (161 individuals), Fort Pierce/St. Lucie, Indian River, Martin Counties CoC (100 individuals), Ocala/Marion County CoC (140 individuals), Pasco County CoC (181 individuals), and St. Petersburg/Clearwater/Largo/Pinellas County CoC (67 individuals).

Although 1,162 young adults without shelter were in Florida's 28 CoCs, the Housing Inventory Count reports only 25 to 27 youth beds were available for young adults alone. When evaluating the number of beds needed in each CoC, a total of 1,135 to 1,137 additional beds are needed for young adults alone without shelter in Florida. Fifty-six percent of the additional beds are needed in the five continuum of cares discussed above: Tampa/Hillsborough County CoC (161 more beds needed), Fort Pierce/St. Lucie, Indian River, Martin Counties CoC (96 more beds needed), Ocala/Marion County CoC (140 more beds needed), Pasco County CoC (181 more beds needed), and Ft Myers/Cape Coral/Lee County CoC (118 more beds needed).

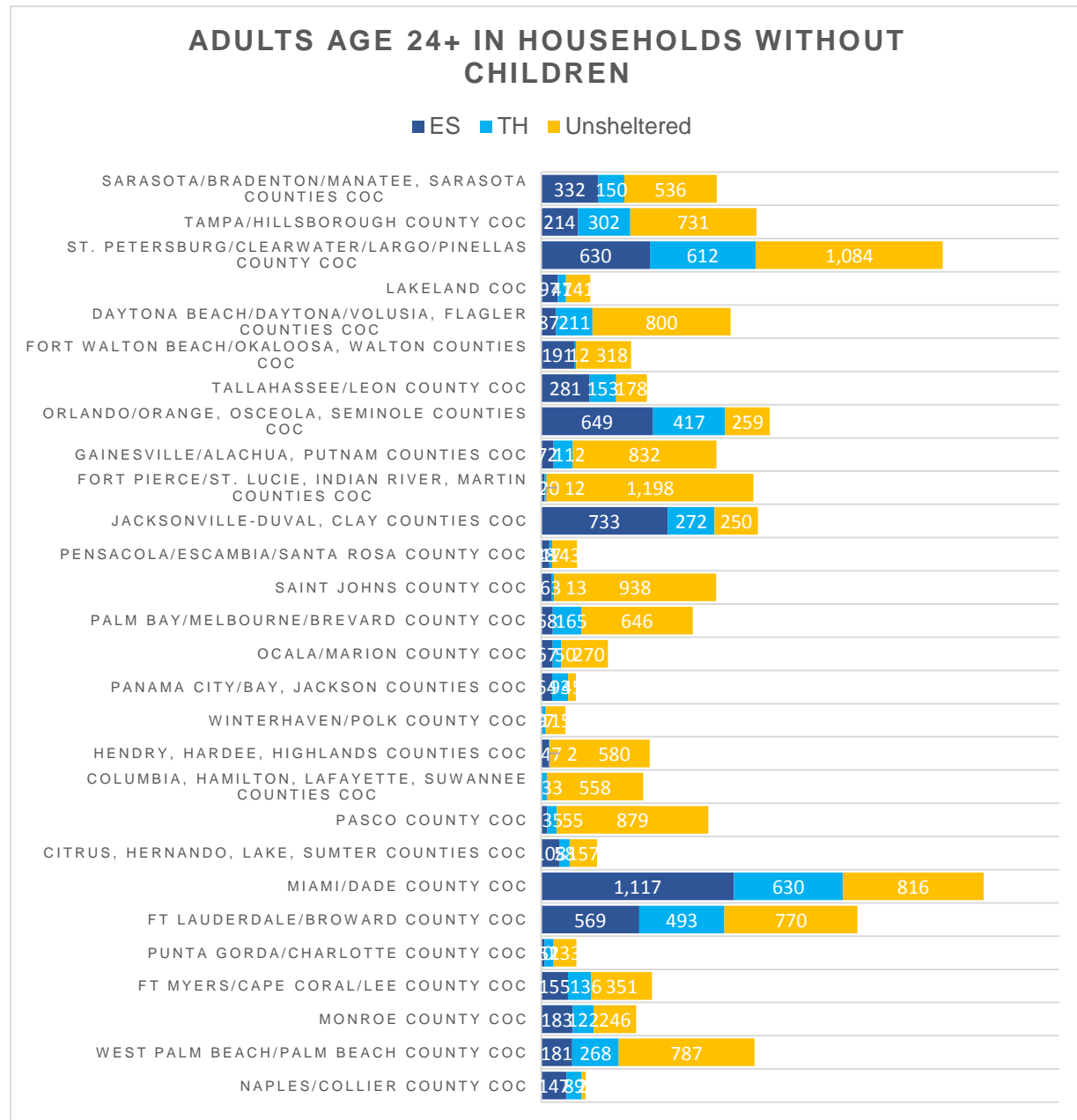
Continuum of Care	Young Adults Alone Without Shelter	Emergency Shelter Beds Available for Young Adults Alone	Transitional Housing Beds Available for Young Adults Alone	Permanent Supportive Housing Beds Available for Young Adults Alone	Additional Beds Needed for Young Adults Alone
Sarasota/Bradenton/Manatee, Sarasota Counties CoC	35	0	0	0	35
Tampa/Hillsborough County CoC	161	0	0	0	161
St. Petersburg/Clearwater/Largo/Pinellas County CoC	67	0	0	0	67
Lakeland CoC	8	0	0	0	8
Daytona Beach/Daytona/Volusia, Flagler Counties CoC	22	0	0	0	22
Fort Walton Beach/Okaloosa, Walton Counties CoC	28	0	0	0	28
Tallahassee/Leon County CoC	9	0	0	0	9
Orlando/Orange, Osceola, Seminole Counties CoC	7	0	0	0	7
Gainesville/Alachua, Putnam Counties CoC	42	0	0	0	42
Fort Pierce/St. Lucie, Indian River, Martin Counties CoC	100	0	4	0	96
Jacksonville-Duval, Clay Counties CoC	28	0	0	0	28
Pensacola/Escambia/Santa Rosa County CoC	15	0	0	0	15

HOMELESS CHILDREN, ADULTS, AND FAMILIES & NEEDED SHELTER BEDS – 2014

Saint Johns County CoC	7	0	0	0	7
Palm Bay/Melbourne/ Brevard County CoC	37	0	2	0	35
Ocala/Marion County CoC	140	0	0	0	140
Panama City/Bay, Jackson Counties CoC	1	0	1	0	0
Winterhaven/Polk County CoC	3	0	0	0	3
Hendry, Hardee, Highlands Counties CoC	54	0	0	0	54
Columbia, Hamilton, Lafayette, Suwannee Counties CoC	36	0	0	0	36
Pasco County CoC	181	0	0	0	181
Citrus, Hernando, Lake, Sumter Counties CoC	5	0	0	0	5
Miami/Dade County CoC	24	0	1	0	23
Ft Lauderdale/Broward County CoC	40	0	12 – 14	0	26 – 28
Punta Gorda/Charlotte County CoC	42	0	0	0	42
Ft Myers/Cape Coral/Lee County CoC	18	0	0	0	18
Monroe County CoC	24	0	0	0	24
West Palm Beach/Palm Beach County CoC	27	0	5	0	22
Naples/Collier County CoC	1	0	0	0	1
Florida Total	1,162	0	25 – 27	0	1,135 – 1,137

Adults Alone

Of the 24,564 adults age 24 and older living in households without children in Florida, 6,187 were in emergency shelters, 4,593 were in transitional housing, and 13,784 were without shelter. One-third of the adults age 24 and older were located in the five CoCs: St. Petersburg/Clearwater/Largo/Pinellas County CoC (2,326 individuals), Orlando/Orange, Osceola, Seminole Counties CoC (1,325 individuals), Jacksonville-Duval, Clay Counties CoC (1,255 individuals), Miami/Dade County CoC (2,563 individuals), and Ft Lauderdale/Broward County CoC (1,832 individuals).



Fifty-six percent of the adult individuals were without shelter. Of the 13,784 adult individuals living alone without shelter, 35 percent were located in five CoCs: St. Petersburg/Clearwater/Largo/Pinellas County CoC (1,084 individuals), Gainesville/Alachua, Putnam Counties CoC (832 individuals), Fort Pierce/St. Lucie, Indian River, Martin Counties (1,198 individuals), Saint Johns County CoC (938 individuals), and Pasco County CoC (879 individuals).

Although 13,784 adult individuals 24 and older were without shelter in Florida's 28 CoCs, the Housing Inventory Count reports only 2,503 to 3,539 beds were available. When evaluating the number of beds needed in each CoC, a total of 10,801 to 11,629 additional beds are needed for adult individuals 24 and older in Florida.

Forty percent of the additional beds are needed in the five continuum of cares with the greatest number of adult individuals 24 and older living without shelter: St. Petersburg/Clearwater/Largo/Pinellas County CoC (863 – 883 more beds needed), Gainesville/Alachua, Putnam Counties CoC (744 – 827 more beds needed), Fort Pierce/St. Lucie, Indian River, Martin Counties (1,193 – 1,198 more beds needed), Saint Johns County CoC (875 – 894 more beds needed), and Pasco County CoC (853 – 862 more beds needed).

Continuum of Care	Adult Individuals Without Shelter	Emergency Shelter Beds Available for Households Without Children	Transitional Housing Beds Available for Households Without Children	Permanent Supportive Housing Beds Available for Households Without Children	Additional Beds Needed for Adults 24+ Alone
Sarasota/Bradenton/Manatee, Sarasota Counties CoC	536	9 – 17 (0 – 8 DV & 1 V)	17 – 23	3 – 19 (0 – 14 V)	477 – 507
Tampa/Hillsborough County CoC	731	87 – 111 (0 – 24 DV & 16 V)	55 – 81 (0 – 2 DV & 5 V)	106 – 250 (56 – 170 V)	288 – 482 ¹
St. Petersburg/Clearwater/Largo/Pinellas County CoC	1,084	91 – 102 (0 – 11 DV)	18 – 20 (0 – 2 DV)	92 – 99 (57 V)	863 – 883
Lakeland CoC	141	41	52	3	45
Daytona Beach/Daytona/Volusia, Flagler Counties CoC	800	26 (16 DV)	17 – 26 (2 – 3 V)	2 – 5	743 – 755
Fort Walton Beach/Oklaloosa, Walton Counties CoC	318	19 (16 DV & 0 – 3 V)	50	0	249
Tallahassee/Leon County CoC	178	0	40 – 55 (0 – 3 DV & 20 – 22 V)	3 – 45 (0 – 42 V)	78 – 135
Orlando/Orange, Osceola, Seminole Counties CoC	259	242 – 323 (0 – 49 DV & 10 V)	43 – 108 (0 – 4 DV)	228 – 251 (0 – 20 V)	0

HOMELESS CHILDREN, ADULTS, AND FAMILIES & NEEDED SHELTER BEDS – 2014

Gainesville/Alachua, Putnam Counties CoC	832	4 – 26 (0 – 10 DV)	0	1 – 62 (1 – 62 V)	744 – 827
Fort Pierce/St. Lucie, Indian River, Martin Counties CoC	1,198	0 – 5 (0 – 5 DV)	0	0	1,193 – 1,198
Jacksonville-Duval, Clay Counties CoC	250	0	34 (1 V)	38	178
Pensacola/Escambia/ Santa Rosa County CoC	143	5	108 (13 V)	25 (1 V)	5
Saint Johns County CoC	938	0 – 13 (0 – 7 DV)	8 – 14	36	875 – 894
Palm Bay/Melbourne/ Brevard County CoC	646	29	18 – 36 (13 – 15 V)	7 (7 V)	574 – 592
Ocala/Marion County CoC	270	15 – 25	8 (4 V)	0	237 – 247
Panama City/Bay, Jackson Counties CoC	45	0	16	50 (50 V)	0
Winterhaven/Polk County CoC	115	1 – 10	2	0	103 – 112
Hendry, Hardee, Highlands Counties CoC	580	5	2	0	573
Columbia, Hamilton, Lafayette, Suwannee Counties CoC	558	6 – 8 (6 – 8 DV)	10 (2 V)	5 (3 DV & 0 – 2 V)	535 – 537
Pasco County CoC	879	2 – 10 (0 – 8 DV)	15 – 16 (15 V)	0	853 – 862
Citrus, Hernando, Lake, Sumter Counties CoC	157	4 – 24 (0 – 18 DV & 0 – 1 V)	7	0	126 – 146
Miami/Dade County CoC	816	59 – 85 (0 – 10 V)	45 – 59 (0 – 1 V)	183 – 285 (0 – 6 V)	387 – 529
Ft Lauderdale/Broward County CoC	770	2 – 28 (0 – 20 DV)	172 – 198 (2 – 5 V)	76 – 114 (62 – 97 V)	420 – 510 ²
Punta Gorda/Charlotte County CoC	133	0	10 – 25 (4 V)	1 – 2	106 – 122
Ft Myers/Cape Coral/Lee County CoC	351	12 – 32 (0 – 15 DV & 1 V)	19 – 25	11 – 17	277 – 309
Monroe County CoC	246	4 – 32 (0 – 23 DV)	9 – 22	12	180 – 221
West Palm Beach/Palm Beach County CoC	787	36 – 53 (0 – 17 DV)	37 – 39 (0 – 2 DV & 18 V)	3	692 – 711
Naples/Collier County CoC	23	20 – 57 (2 – 27 DV)	76 – 78 (0 – 2 DV)	0	0
Florida Total	13,784	719 – 1,086 (40 – 282 DV & 28 – 42 V)	888 – 1,114 (0 – 15 DV & 99 – 108 V)	885 – 1,328 (3 DV & 234 – 528 V)	10,801 – 11, 629 ¹⁻²

Notes:

V = Veteran bed

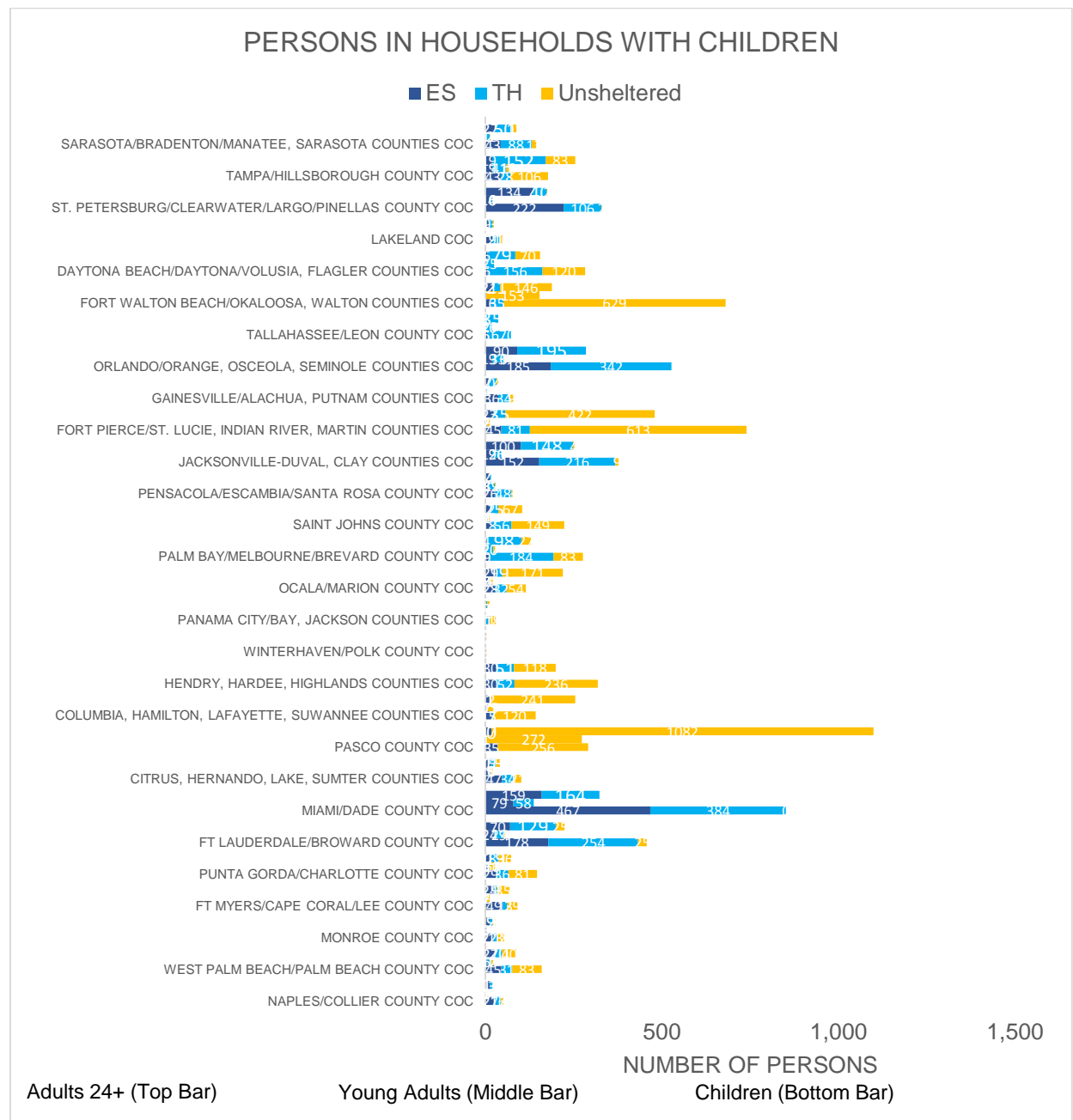
DV = Domestic Violence Bed

¹ Total reflects 1 RRH bed available for households without children.

² Total reflects 10 RRH beds available for households without children.

Families With Children

Of the 12,812 homeless adults and children living together in families in Florida, 2,931 were in emergency shelters, 4,034 were in transitional housing, and 5,847 were without shelter. Forty-six percent of the persons in households with children were living in five continuum of cares: Fort Walton Beach/Okaloosa, Walton Counties CoC (1,021 adults and children), Fort Pierce/St. Lucie, Indian River, Martin Counties CoC (1,231 adults and children), Pasco County CoC (1,663 adults and children), Miami/Dade County CoC (1,311 adults and children), and Ft Lauderdale/Broward County CoC (738 adults and children).



Forty-five percent of the adults and children living together in families were without shelter. Of the 5,847 adults and children living together in families without shelter, 73 percent were located in five CoCs: Fort Walton Beach/Okaloosa, Walton Counties CoC (928 adults and children), Fort Pierce/St. Lucie, Indian River, Martin Counties CoC (1,044 adults and children), Hendry, Hardee, Highlands Counties CoC (354 adults and children), Columbia, Hamilton, Lafayette, Suwannee Counties CoC (376 adults and children), and Pasco County CoC (1,610 adults and children).

Although 5,847 adult and children were living together in families without shelter in Florida, the Housing Inventory Count reports only 2,320 to 3,976 beds were available and not all of these beds may have been in available units. Overall, at least 4,605 to 4,754 additional beds are needed for families to ensure that there are enough beds in the places where they are needed. Evaluating the availability of beds for families in each continuum of care, more beds are needed in 13 of the CoCs.

About 84 percent of the additional beds are needed in the five continuum of cares with the greatest number of adults and children living together in families without shelter: Fort Walton Beach/Okaloosa, Walton Counties CoC (at least 787 more beds needed), Fort Pierce/St. Lucie, Indian River, Martin Counties CoC (at least 962 to 967 more beds needed), Hendry, Hardee, Highlands Counties CoC (at least 351 more beds needed), Columbia, Hamilton, Lafayette, Suwannee Counties CoC (at least 350 to 352 more beds needed), and Pasco County CoC (at least 1,589 to 1,598 more beds needed).

Continuum of Care	Adults and Children Without Shelter	Emergency Shelter Beds Available for Households With Children	Transitional Housing Beds Available for Households With Children	Permanent Supportive Housing Beds Available for Households With Children	Additional Beds Needed for Persons in Households With Children
Sarasota/Bradenton/Manatee, Sarasota Counties CoC	26	23 – 31 (15 – 23 DV)	47 – 53	22 – 38 (0 – 14 V)	0
Tampa/Hillsborough County CoC	199	11 – 35 (11 – 35 DV)	237 – 263 (11 – 13 DV)	45 – 187 (0 – 114 V)	0 ¹
St. Petersburg/Clearwater/Largo/Pinellas County CoC	4	8 – 19 (0 – 11 DV)	120 – 122 (24 – 26 DV & 0 – 9 V)	14 – 23	0 ²
Lakeland CoC	15	24	119	10	0
Daytona Beach/Daytona/Volusia, Flagler Counties CoC	190	21 (16 DV)	31 – 45	31 – 34	76 – 93 ³
Fort Walton Beach/Okaloosa, Walton Counties CoC	928	4	22	60	787 ⁴

HOMELESS CHILDREN, ADULTS, AND FAMILIES & NEEDED SHELTER BEDS – 2014

Tallahassee/Leon County CoC	0	0	24 – 39 (15 – 18 DV & 0 – 2 V)	0 – 42 (0 – 42 V)	0
Orlando/Orange, Osceola, Seminole Counties CoC	0	39 – 120 (20 – 69 DV)	203 – 305 (0 – 19 DV)	0 – 23 (0 – 20 V)	0 ⁵
Gainesville/Alachua, Putnam Counties CoC	14	4 – 18 (0 – 10 DV)	2	0 – 61 (0 – 61 V)	0 – 8
Fort Pierce/St. Lucie, Indian River, Martin Counties CoC	1,044	62 – 67 (24 – 29 DV)	10	5	962 – 967
Jacksonville-Duval, Clay Counties CoC	13	45 (39 DV)	88 (1 V)	28	0
Pensacola/Escambia/Santa Rosa County CoC	5	43 (39 DV)	43	0	0
Saint Johns County CoC	222	0 – 13 (0 – 7 DV)	24 – 30 (3 DV)	25	154 – 173
Palm Bay/Melbourne/Brevard County CoC	117	3	127 – 145 (11 DV & 0 – 2 V)	29	0
Ocala/Marion County CoC	234	16 – 26 (14 DV)	28	0	180 – 190
Panama City/Bay, Jackson Counties CoC	26	9	18	0	0
Winterhaven/Polk County CoC	6	21 – 30	0	0	0
Hendry, Hardee, Highlands Counties CoC	354	3	0	0	351
Columbia, Hamilton, Lafayette, Suwannee Counties CoC	376	20 – 22 (18 – 20 DV)	2 (2 DV)	2 (2 DV)	350 – 352
Pasco County CoC	1,610	0 – 8 (0 – 8 DV)	0 – 1	12	1,589 – 1,598
Citrus, Hernando, Lake, Sumter Counties CoC	38	35 – 55 (23 – 41 DV & 0 – 1 V)	6	0	0
Miami/Dade County CoC	0	3 – 29 (0 – 10 V)	232 – 246 (133 DV)	278 – 382 (0 – 4 V)	0
Ft Lauderdale/Broward County CoC	54	2 – 28 (2 – 22 DV)	17 – 27 (0 – 3 V)	0 – 38 (0 – 35 V)	0 ⁶
Punta Gorda/Charlotte County CoC	133	0	0 – 15	0 – 1	117 – 133
Ft Myers/Cape Coral/Lee County CoC	73	2 – 22 (2 – 17 DV)	0 – 6	0 – 6	39 – 71
Monroe County CoC	25	1 – 29 (1 – 24 DV)	1 – 14	1	0 – 22
West Palm Beach/Palm Beach County CoC	130	58 – 75 (6 – 23 DV)	58 – 60 (31 – 33 DV)	146	0

HOMELESS CHILDREN, ADULTS, AND FAMILIES & NEEDED SHELTER BEDS – 2014

Naples/Collier County CoC	11	2 – 39 (0 – 25 DV)	0 – 2 (0 – 2 DV)	0	0 – 9
Florida Total	5847	459 – 818 (230 – 472 DV & 0 – 11 V)	1,459 – 1,711 (230 – 260 DV & 1 – 17 V)	708 – 1,153 (2 DV & 0 – 290 V)	4,605 – 4,754 ¹⁻⁶
Notes: V = Veteran bed DV = Domestic Violence Bed ¹ Total reflects 14 OPH bed available for households with children. ² Total reflects 15 RRH beds available for households with children. ³ Total reflects 14 RRH beds available for households with children. ⁴ Total reflects 55 OPH beds available for households with children. ⁵ Total reflects 142 DEM beds available for households with children. ⁶ Total reflects 54 RRH beds available for households with children.					

Homeless Populations

In Florida, 19 percent of the 41,542 persons homeless on a given night in January 2014 were chronically homeless. Also, 14 percent were characterized as severely mentally ill and 15 percent were characterized as having chronic substance abuse. Veterans comprised 10 percent of the homeless population, domestic violence survivors comprised 6 percent of the homeless population, and persons with HIV/AIDS comprised 1 percent of the homeless population.

Homeless Populations in Shelters							
CoC Name	Chronic Individuals	Chronic Persons in Families	SMI	Chronic Substance Abuse	Veterans	HIV	DV
Sarasota/Bradenton/Manatee, Sarasota Counties CoC	60	16	10	33	95	1	27
Tampa/Hillsborough County CoC	30	0	139	170	110	8	
St. Petersburg/Clearwater/Largo/Pinellas County CoC	259	13	514	405	475	8	233
Lakeland CoC	19	0	10	18	8	5	8
Daytona Beach/Daytona/Volusia, Flagler Counties CoC	14	0	63	112	55	1	60
Fort Walton Beach/Okaloosa, Walton Counties CoC	123	0	55	36	45	2	0
Tallahassee/Leon County CoC	123	0	160	158	83	4	164
Orlando/Orange, Osceola, Seminole Counties CoC	67	0	135	244	255	99	295
Gainesville/Alachua, Putnam Counties CoC	38	30	37	18	111	10	37
Fort Pierce/St. Lucie, Indian River, Martin Counties CoC	10	0	23	0	4	2	0
Jacksonville-Duval, Clay Counties CoC	267	19	148	403	182	14	163
Pensacola/Escambia/Santa Rosa County CoC	79	7	86	97	75	3	72
Saint Johns County CoC	17	0	9	4	11	1	28
Palm Bay/Melbourne/Brevard County CoC	10	0	1	7	211	0	11
Ocala/Marion County CoC	3	3	16	27	71	0	37
Panama City/Bay, Jackson Counties CoC	6	0	4	2	18	0	10
Winterhaven/Polk County CoC	1	0	2	21	3	0	3
Hendry, Hardee, Highlands Counties CoC	27	7	0	0	0	0	0
Columbia, Hamilton, Lafayette, Suwannee Counties CoC	0	0	15	24	25	0	0
Pasco County CoC	7	10	16	27	36	0	16
Citrus, Hernando, Lake, Sumter Counties CoC	10	0	34	62	25	0	101

HOMELESS CHILDREN, ADULTS, AND FAMILIES & NEEDED SHELTER BEDS – 2014

Miami/Dade County CoC	243	44	803	646	175	64	166
Ft Lauderdale/Broward County CoC	151	18	393	642	143	135	45
Punta Gorda/Charlotte County CoC	12	7	18	5	35	0	28
Ft Myers/Cape Coral/Lee County CoC	21	3	147	135	59	0	73
Monroe County CoC	23	2	50	48	36	4	42
West Palm Beach/Palm Beach County CoC	70	2	175	283	58	9	31
Naples/Collier County CoC	27	5	24	154	20	3	72
Florida Total	1,717	186	3,087	3,781	2,424	373	1,722
Notes: Tampa/Hillsborough County CoC did not report data on the number of domestic violence survivors with shelter.							

Homeless Populations Without Shelter							
CoC Name	Chronic Individuals	Chronic Persons in Families	SMI	Chronic Substance Abuse	Veterans	HIV	DV
Sarasota/Bradenton/Manatee, Sarasota Counties CoC	190	4	70	74	75	8	130
Tampa/Hillsborough County CoC	296	83	439	313	126	67	
St. Petersburg/Clearwater/Largo/Pinellas County CoC	215	2	215	172	75	8	19
Lakeland CoC	58	3	25	10	23	3	30
Daytona Beach/Daytona/Volusia, Flagler Counties CoC	184	0	25	36	80	0	0
Fort Walton Beach/Okaloosa, Walton Counties CoC	231	82	73	85	166	1	21
Tallahassee/Leon County CoC	97	0	90	117	25	3	18
Orlando/Orange, Osceola, Seminole Counties CoC	58	0	59	57	44	10	0
Gainesville/Alachua, Putnam Counties CoC	393	10	242	267	118	15	54
Fort Pierce/St. Lucie, Indian River, Martin Counties CoC	121	0	148	84	114	13	0
Jacksonville-Duval, Clay Counties CoC	132	13	95	121	42	6	3
Pensacola/Escambia/Santa Rosa County CoC	98	0	62	41	25	1	55
Saint Johns County CoC	48	0	18	10	37	1	0

HOMELESS CHILDREN, ADULTS, AND FAMILIES & NEEDED SHELTER BEDS – 2014

[illegible]

Chronically Homeless Persons

Of the 41,542 homeless people in Florida, 7,989 were chronically homeless. Seventy-six percent of the chronically homeless persons were without shelter: 5,126 individuals and 960 persons in families.

Forty-five percent of the chronically homeless individuals without shelter were in five continuum of care areas: Gainesville/Alachua, Putnam Counties CoC (393 individuals), Columbia, Hamilton, Lafayette, Suwannee Counties CoC (350 individuals), Pasco County CoC (802 individuals), Miami/Dade County CoC (445 individuals), and Ft Lauderdale/Broward County CoC (346 individuals). The Housing Inventory Count reports between 1,784 and 2,453 rapid rehousing, transitional housing, permanent housing, and safe haven beds. Between 3,166 and 3,704 more transitional housing, permanent housing, and rapid-rehousing beds may be needed for chronically homeless individuals.

Continuum of Care	Chronically Homeless Individuals Without Shelter	Transitional Housing Beds Available for Households Without Children	Permanent Supportive Housing Beds Available for Households Without Children	Additional Beds Needed for Chronically Homeless Individuals
Sarasota/Bradenton/Manatee, Sarasota Counties CoC	190	17 – 23	3 – 19 (0 – 14 V)	148 – 170
Tampa/Hillsborough County CoC	296	55 – 81 (0 – 2 DV & 5 V)	106 – 250 (56 – 170 V)	0 – 134 ¹
St. Petersburg/Clearwater/Largo/Pinellas County CoC	215	18 – 20 (0 – 2 DV)	92 – 99 (57 V)	96 – 105
Lakeland CoC	58	52	3	3
Daytona Beach/Daytona/Volusia, Flagler Counties CoC	184	17 – 26 (2 – 3 V)	2 – 5	153 – 165
Fort Walton Beach/Oklaloosa, Walton Counties CoC	231	50	0	181
Tallahassee/Leon County CoC	97	40 – 55 (0 – 3 DV & 20 – 22 V)	3 – 45 (0 – 42 V)	0 – 54
Orlando/Orange, Osceola, Seminole Counties CoC	58	43 – 108 (0 – 4 DV)	228 – 251 (0 – 20 V)	0
Gainesville/Alachua, Putnam Counties CoC	393	0	1 – 62 (1 – 62 V)	331 – 392
Fort Pierce/St. Lucie, Indian River, Martin Counties CoC	121	0	0	121
Jacksonville-Duval, Clay Counties CoC	132	34 (1 V)	38	60
Pensacola/Escambia/Santa Rosa County CoC	98	108 (13 V)	25 (1 V)	0

HOMELESS CHILDREN, ADULTS, AND FAMILIES & NEEDED SHELTER BEDS – 2014

Saint Johns County CoC	48	8 – 14	36	0 – 4
Palm Bay/Melbourne/Brevard County CoC	107	18 – 36 (13 – 15 V)	7 (7 V)	64 – 82
Ocala/Marion County CoC	82	8 (4 V)	0	74
Panama City/Bay, Jackson Counties CoC	30	16	50 (50 V)	0
Winterhaven/Polk County CoC	33	2	0	31
Hendry, Hardee, Highlands Counties CoC	83	2	0	81
Columbia, Hamilton, Lafayette, Suwannee Counties CoC	350	10 (2 V)	5 (3 DV & 0 – 2 V)	335
Pasco County CoC	802	15 – 16 (15 V)	0	786 – 787
Citrus, Hernando, Lake, Sumter Counties CoC	0	7	0	0
Miami/Dade County CoC	445	45 – 59 (0 – 1 V)	183 – 285 (0 – 6 V)	101 – 217
Ft Lauderdale/Broward County CoC	346	172 – 198 (2 – 5 V)	76 – 114 (62 – 97 V)	24 – 88 ²
Punta Gorda/Charlotte County CoC	137	10 – 25 (4 V)	1 – 2	110 – 126
Ft Myers/Cape Coral/Lee County CoC	203	19 – 25	11 – 17	161 – 173
Monroe County CoC	91	9 – 22	12	57 – 70
West Palm Beach/Palm Beach County CoC	291	37 – 39 (0 – 2 DV & 18 V)	3	249 – 251
Naples/Collier County CoC	5	76 – 78 (0 – 2 DV)	0	0
Florida Total	5,126	888 – 1,114 (0 – 15 DV & 99 – 108 V)	885 – 1,328 (3 DV & 234 – 528 V)	3,166 – 3,704 ¹⁻²
Notes: V = Veteran bed DV = Domestic Violence Bed ¹ Total reflects 1 RRH bed available for households without children. ² Total reflects 10 RRH beds available for households without children.				

Ninety-one percent of the chronically homeless persons in families without shelter were in five continuum of care areas: Tampa/Hillsborough County CoC (83 individuals), Fort Walton Beach/Okaloosa, Walton Counties CoC (82 individuals), Columbia, Hamilton, Lafayette, Suwannee Counties CoC (271 individuals), Pasco County CoC (385 individuals), and Ft Myers/Cape Coral/Lee County CoC (54 individuals). The Housing Inventory Count reports between 2,461 and 3,158 rapid rehousing, transitional housing, permanent housing, and safe haven beds. Depending on the number of available beds in available units for families, at least 639 and 690 more transitional housing, permanent housing, and rapid-rehousing beds may be needed for chronically homeless persons in families.

HOMELESS CHILDREN, ADULTS, AND FAMILIES & NEEDED SHELTER BEDS – 2014

Continuum of Care	Chronically Homeless Persons in Families Without Shelter	Transitional Housing Beds Available for Households With Children	Permanent Supportive Housing Beds Available for Households With Children	Additional Beds Needed for Chronically Homeless Persons in Families
Sarasota/Bradenton/Manatee, Sarasota Counties CoC	4	47 – 53	22 – 38 (0 – 14 V)	0
Tampa/Hillsborough County CoC	83	237 – 263 (11 – 13 DV)	45 – 187 (0 – 114 V)	0 ¹
St. Petersburg/Clearwater/Largo/Pinellas County CoC	2	120 – 122 (24 – 26 DV & 0 – 9 V)	14 – 23	0 ²
Lakeland CoC	3	119	10	0
Daytona Beach/Daytona/Volusia, Flagler Counties CoC	0	31 – 45	31 – 34	0 ³
Fort Walton Beach/Okaloosa, Walton Counties CoC	82	22	60	0 ⁴
Tallahassee/Leon County CoC	0	24 – 39 (15 – 18 DV & 0 – 2 V)	0 – 42 (0 – 42 V)	0
Orlando/Orange, Osceola, Seminole Counties CoC	0	203 – 305 (0 – 19 DV)	0 – 23 (0 – 20 V)	0 ⁵
Gainesville/Alachua, Putnam Counties CoC	10	2	0 – 61 (0 – 61 V)	0 – 8
Fort Pierce/St. Lucie, Indian River, Martin Counties CoC	0	10	5	0
Jacksonville-Duval, Clay Counties CoC	13	88 (1 V)	28	0
Pensacola/Escambia/Santa Rosa County CoC	0	43	0	0
Saint Johns County CoC	0	24 – 30 (3 DV)	25	0
Palm Bay/Melbourne/Brevard County CoC	3	127 – 145 (11 DV & 0 – 2 V)	29	0
Ocala/Marion County CoC	7	28	0	0
Panama City/Bay, Jackson Counties CoC	0	18	0	0
Winterhaven/Polk County CoC	0	0	0	0
Hendry, Hardee, Highlands Counties CoC	0	0	0	0
Columbia, Hamilton, Lafayette, Suwannee Counties CoC	271	2 (2 DV)	2 (2 DV)	267
Pasco County CoC	385	0 - 1	12	372 – 373

HOMELESS CHILDREN, ADULTS, AND FAMILIES & NEEDED SHELTER BEDS – 2014

Citrus, Hernando, Lake, Sumter Counties CoC	0	6	0	0
Miami/Dade County CoC	0	232 – 246 (133 DV)	278 – 382 (0 – 4 V)	0
Ft Lauderdale/Broward County CoC	10	17 – 27 (0 – 3 V)	0 – 38 (0 – 35 V)	0 ⁶
Punta Gorda/Charlotte County CoC	0	0 – 15	0 – 1	0
Ft Myers/Cape Coral/Lee County CoC	54	0 – 6	0 – 6	0 – 42
Monroe County CoC	0	1 – 14	1	0
West Palm Beach/Palm Beach County CoC	33	58 – 60 (31 – 33 DV)	146	0
Naples/Collier County CoC	0	0 – 2 (0 – 2 DV)	0	0
Florida Total	960	1,459 – 1,711 (230 – 260 DV & 1 – 17 V)	708 – 1,153 (2 DV & 0 – 290 V)	639 – 690 ¹⁻⁶
Notes: V = Veteran bed DV = Domestic Violence Bed ¹ Total reflects 14 OPH bed available for households with children. ² Total reflects 15 RRH beds available for households with children. ³ Total reflects 14 RRH beds available for households with children. ⁴ Total reflects 55 OPH beds available for households with children. ⁵ Total reflects 142 DEM beds available for households with children. ⁶ Total reflects 54 RRH beds available for households with children.				

Domestic Violence Survivors

Of the 41,542 homeless people in Florida, 2,724 were escaping domestic violence. Thirty-six percent of the domestic violence survivors (1,002 individuals) were without shelter.

Fifty-six percent of the domestic violence survivors without shelter were in five continuum of care areas: Sarasota/Bradenton/Manatee, Sarasota Counties CoC (130 individuals), Palm Bay/Melbourne/Brevard County CoC (108 individuals), Columbia, Hamilton, Lafayette, Suwannee Counties CoC (90 individuals), Miami/Dade County CoC (151 individuals), and West Palm Beach/Palm Beach County CoC (91 individuals). The Housing Inventory Count reports between 43 and 300 domestic violence and rapid rehousing beds for households without children and between 462 and 734 domestic violence and rapid rehousing beds for households with children. Depending on the number of beds in available units, between 502 and 678 more transitional housing, permanent housing, and rapid-rehousing beds may be needed for adults and children escaping domestic violence.

CoC Name	Households Without Children				Households With Children			Additional Beds Needed for Domestic Violence Survivors
	DV Survivors w/o shelter	ES Beds	TH Beds	PSH Beds	ES Beds	TH Beds	PSH Beds	
Sarasota/Bradenton/Manatee, Sarasota Counties CoC	130	0 – 8	0	0	15 – 23	0	0	99 – 115
Tampa/Hillsborough County CoC		0 – 24	0 – 2	0	11 – 35	11 – 13	0	
St. Petersburg/Clearwater/Largo/Pinellas County CoC	19	0 – 11	0 – 2	0	0 – 11	24 – 26	0	0 ²
Lakeland CoC	30	0	0	0	0	0	0	30
Daytona Beach/Daytona/Volusia, Flagler Counties CoC	0	16	0	0	16	0	0	0 ³
Fort Walton Beach/Okaloosa, Walton Counties CoC	21	16	0	0	0	0	0	5
Tallahassee/Leon County CoC	18	0	0 – 3	0	0	15 – 18	0	0 – 3
Orlando/Orange, Osceola, Seminole Counties CoC	0	0 – 49	0 – 4	0	20 – 69	0 – 19	0	0 ⁴
Gainesville/Alachua, Putnam Counties CoC	54	0 – 10	0	0	0 – 10	0	0	34 – 54

HOMELESS CHILDREN, ADULTS, AND FAMILIES & NEEDED SHELTER BEDS – 2014

Fort Pierce/St. Lucie, Indian River, Martin Counties CoC	0	0 – 5	0	0	24 – 29	0	0	0
Jacksonville-Duval, Clay Counties CoC	3	0	0	0	39	0	0	0
Pensacola/Escambia/ Santa Rosa County CoC	55	0	0	0	39	0	0	16
Saint Johns County CoC	0	0 – 7	0	0	0 – 7	3	0	0
Palm Bay/Melbourne/Brevard County CoC	108	0	0	0	0	11	0	97
Ocala/Marion County CoC	0	0	0	0	14	0	0	0
Panama City/Bay, Jackson Counties CoC	0	0	0	0	0	0	0	0
Winterhaven/Polk County CoC	23	0	0	0	0	0	0	23
Hendry, Hardee, Highlands Counties CoC	39	0	0	0	0	0	0	39
Columbia, Hamilton, Lafayette, Suwannee Counties CoC	90	6 – 8	0	3	18 – 20	2	2	55 – 59
Pasco County CoC	42	0 – 8	0	0	0 – 8	0	0	26 – 42
Citrus, Hernando, Lake, Sumter Counties CoC	0	0 – 18	0	0	23 – 41	0	0	0
Miami/Dade County CoC	151	0	0	0	0	133	0	18
Ft Lauderdale/Broward County CoC	0	0 – 20	0	0	2 – 22	0	0	0 ⁵
Punta Gorda/Charlotte County CoC	12	0	0	0	0	0	0	12
Ft Myers/Cape Coral/Lee County CoC	58	0 – 15	0	0	2 – 17	0	0	26 – 56
Monroe County CoC	53	0 – 23	0	0	1 – 24	0	0	6 – 52
West Palm Beach/Palm Beach County CoC	91	0 – 17	0 – 2	0	6 – 23	31 – 33	0	16 – 54
Naples/Collier County CoC	5	2 – 27	0 – 2	0	0 – 25	0 – 2	0	0 – 3
Florida Total	1,002	40 – 282	0 – 15	3	230 – 472	230 – 260	2	502 – 678 ¹⁻⁵

Notes: Tampa/Hillsborough County CoC did not report data on the number of domestic violence survivors without shelter.

¹ Tampa Total reflects 1 RRH bed available for households without children.

² St. Petersburg Total reflects 15 RRH beds available for households with children.

³ Daytona Beach Total reflects 14 RRH beds available for households with children.

⁴ Orlando Total reflects 142 DEM beds available for households with children.

⁵ Ft Lauderdale Total reflects 10 RRH beds available for households without children and 54 RRH beds available for households with children.

Conclusion

In Florida, there were 41,542 homeless persons and 21,691 persons without shelter. At least 852 to 854 beds are needed for children living alone, 1,135 to 1,137 additional beds are needed for young adults alone without shelter, 10,801 to 11,629 additional beds are needed for adult individuals without shelter, and 4,605 to 4,754 additional beds are needed for households with children without shelter. At least 3,166 to 3,704 additional beds are needed for chronically homeless individuals, 639 to 690 additional beds are needed for chronically homeless persons in families, and 502 to 678 additional domestic violence beds are needed. Additional shelters or beds are needed in all 28 Florida CoCs.