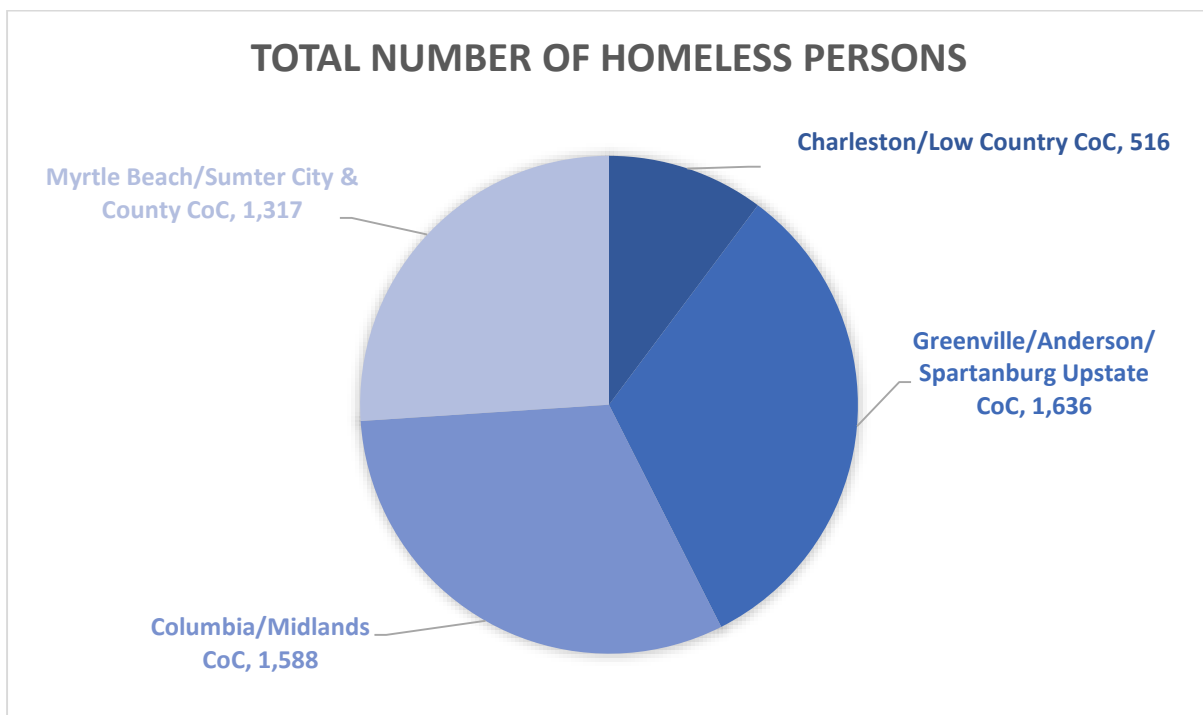


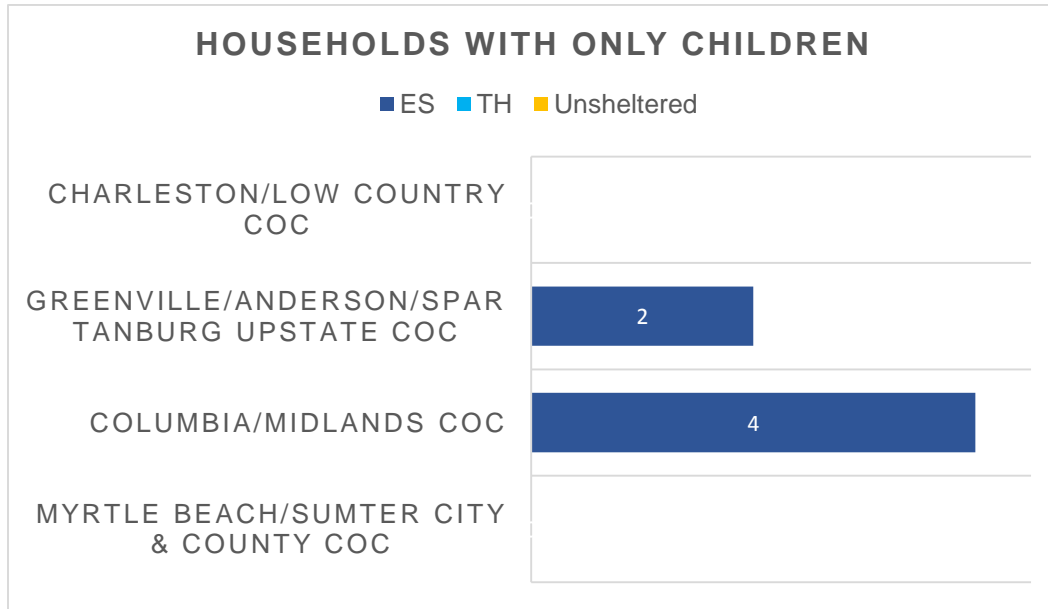
SOUTH CAROLINA

In South Carolina, there were 5,057 homeless persons on a given night in January 2014. As the figure shows, 1,636 of them were in the Greenville/Anderson/Spartanburg Upstate CoC, 1,588 were in the Columbia/Midlands CoC, 1,317 were in the Myrtle Beach/Sumter City & County CoC, and 516 were in the Charleston/Low Country CoC. There were 6 children alone, 1,244 persons in households with children, 293 young adults ages 18 to 24 alone, and 3,514 adults ages 24 and older alone. Thirty-five percent of the homeless persons in South Carolina were without shelter.



Children Alone

Of the 6 children alone, two-thirds were in the Columbia/Midlands CoC. The 4 children in the Columbia/Midlands CoC were in emergency shelters. The two children in the Greenville/Anderson/Spartanburg Upstate CoC were in emergency shelters.

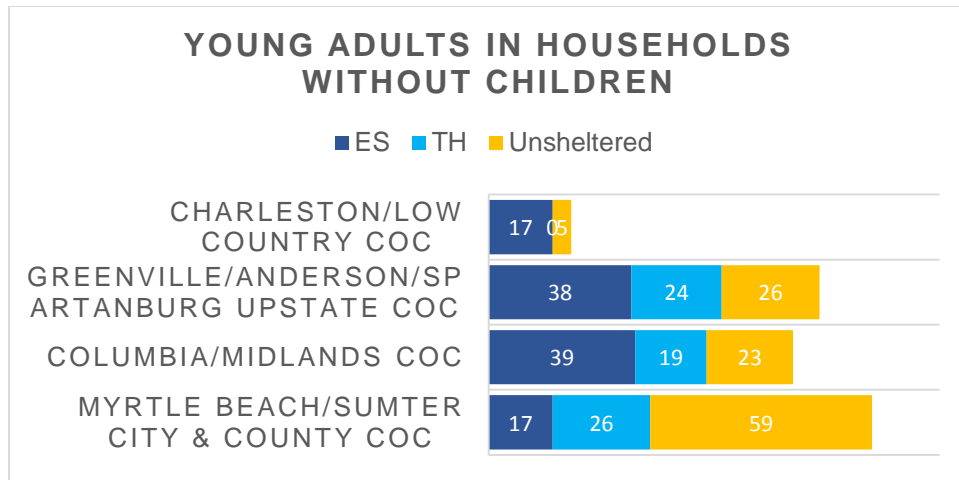


None of the children living alone in South Carolina were without shelter. The Housing Inventory Count reports 10 youth beds available for children alone. Therefore, there were enough beds for children living alone.

Continuum of Care	Children Alone Without Shelter	Emergency Shelter Youth Beds Available for Children Alone	Transitional Housing Youth Beds Available for Children Alone	Permanent Supportive Housing Beds Available for Children Alone	Additional Beds Needed for Children Alone
Charleston/Low Country CoC	0	0	0	0	0
Greenville/Anderson/Spartanburg Upstate CoC	0	0	7	0	0
Columbia/Midlands CoC	0	0	0	0	0
Myrtle Beach/Sumter City & County CoC	0	0	3	0	0
South Carolina Total	0	0	10	0	0

Young Adults Alone

Of the 293 young adults living alone in South Carolina, 111 were in emergency shelters, 69 were in transitional housing, and 113 were without shelter. Thirty-four percent of the young adults were living in the Myrtle Beach/Sumter City & County CoC, 30 percent were living in the Greenville/Anderson/Spartanburg Upstate CoC, 27 percent were living in the Columbia/Midlands CoC, and 7 percent were living in the Charleston/Low Country CoC.



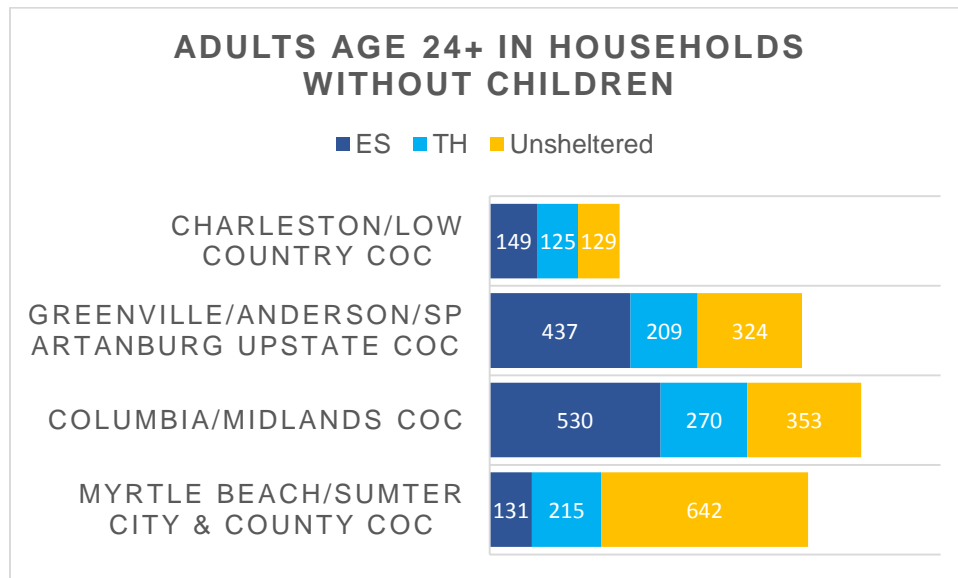
Thirty-eight percent of the young adults were without shelter. Fifty-two percent of the young adults without shelter were in the Myrtle Beach/Sumter City & County CoC, 23 percent were in the Greenville/Anderson/Spartanburg Upstate CoC, 20 percent were in the Columbia/Midlands CoC, and 4 percent were in the Charleston/Low Country CoC.

Although 113 young adults were without shelter in South Carolina, the Housing Inventory Count reports only 8 youth beds were available for young adults alone. When evaluating the number of beds needed in each CoC, a total of 108 additional beds are needed for young adults alone without shelter in South Carolina.

Continuum of Care	Young Adults Alone Without Shelter	Emergency Shelter Beds Available for Young Adults Alone	Transitional Housing Beds Available for Young Adults Alone	Permanent Supportive Housing Beds Available for Young Adults Alone	Additional Beds Needed for Young Adults Alone
Charleston/Low Country CoC	59	0	0	0	59
Greenville/Anderson/Spartanburg Upstate CoC	23	0	0	0	23
Columbia/Midlands CoC	26	0	0	0	26
Myrtle Beach/Sumter City & County CoC	5	0	8	0	0
South Carolina Total	113	0	8	0	108

Adults Alone

Of the 3,514 adults age 24 and older living in households without children in South Carolina, 1,247 were in emergency shelters, 819 were in transitional housing, and 1,448 were without shelter. Thirty-two percent of the adults age 24 and older were located in the Columbia/Midlands CoC, 28 percent were in the Myrtle Beach/Sumter City & County CoC, 27 percent were in the Greenville/Anderson/Spartanburg Upstate CoC, and 11 percent were in the Charleston/Low Country CoC.



Forty-one percent of the adult individuals were without shelter. Forty-four percent of the adult individuals without shelter were in the Myrtle Beach/Sumter City & County CoC, 24 percent were in the Columbia/Midlands CoC, 22 percent were in the Greenville/Anderson/Spartanburg Upstate CoC, and 8 percent were in the Charleston/Low Country CoC.

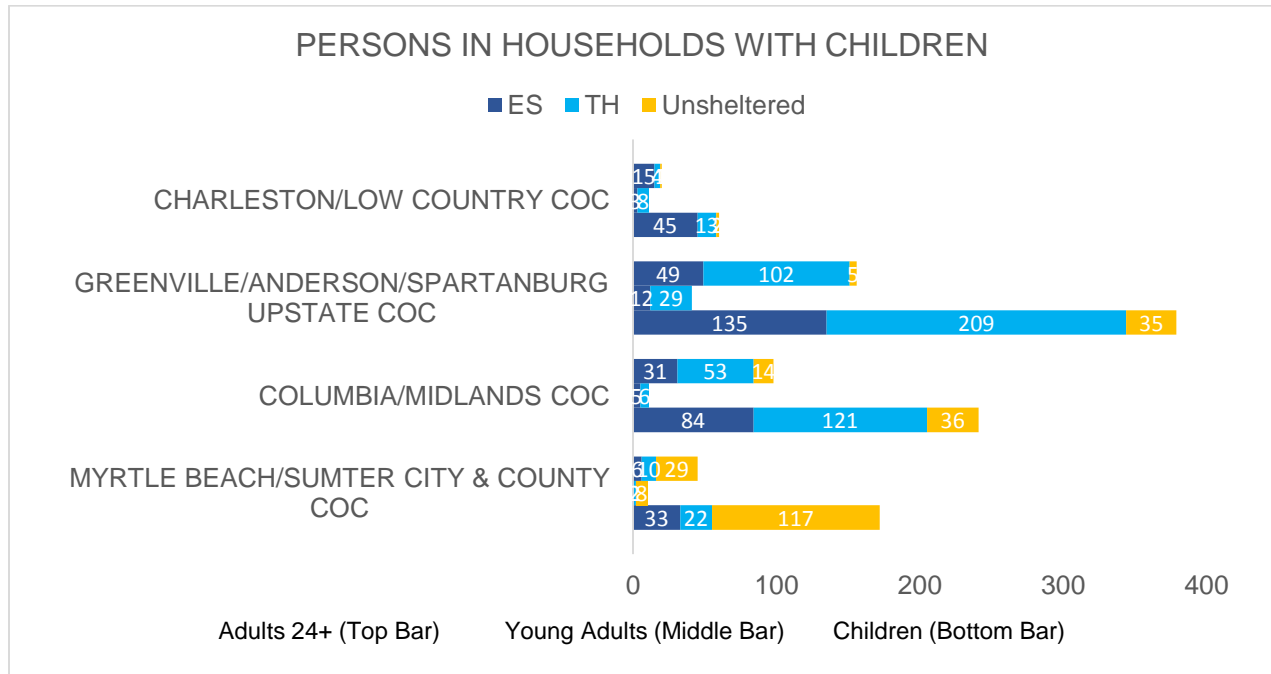
Although 1,448 adult individuals were without shelter in South Carolina, the Housing Inventory Count reports only 435 to 722 beds were available for adult individuals age 24 and older. When evaluating the number of beds needed in each CoC, a total of 726 to 1,013 additional beds are needed for adult individuals without shelter.

HOMELESS CHILDREN, ADULTS, AND FAMILIES & NEEDED SHELTER BEDS – 2014

Continuum of Care	Adult Individuals Without Shelter	Emergency Shelter Beds Available for Households Without Children	Transitional Housing Beds Available for Households Without Children	Permanent Supportive Housing Beds Available for Households Without Children	Additional Beds Needed for Adults 24+ Alone
Charleston/Low Country CoC	129	0 - 5	25 (15 V)	59	40 – 45
Greenville/Anderson/Spartanburg Upstate CoC	324	128 – 209 (0 – 10 DV)	88 – 105 (9 V)	6 – 8	1 - 101 ¹
Columbia/Midlands CoC	353	18 – 43 (0 – 21 DV)	75 – 106 (18 V)	9 – 111 (8 – 96 V)	93 - 251
Myrtle Beach/Sumter City & County CoC	642	26 – 46 (9 – 22 DV)	0 – 4	0	592 - 616
South Carolina Total	1,448	172 – 303 (9 – 53 DV)	188 – 240 (42 V)	74 – 178 (8 – 96 V)	726 - 1,013 ¹
Notes: V = Veteran bed DV = Domestic Violence Bed ¹ Total reflects 1 OPH bed (1 V) available for households without children					

Families With Children

Of the 1,244 homeless adults and children living together in families in South Carolina, 418 were in emergency shelters, 579 were in transitional housing, and 247 were without shelter. Forty-six percent of the persons in households with children were living in the Greenville/Anderson/Spartanburg Upstate CoC, 28 percent were living in the Columbia/Midlands CoC, 18 percent were living in the Myrtle Beach/Sumter City & County CoC, and 7 percent were living in the Charleston/Low Country CoC.



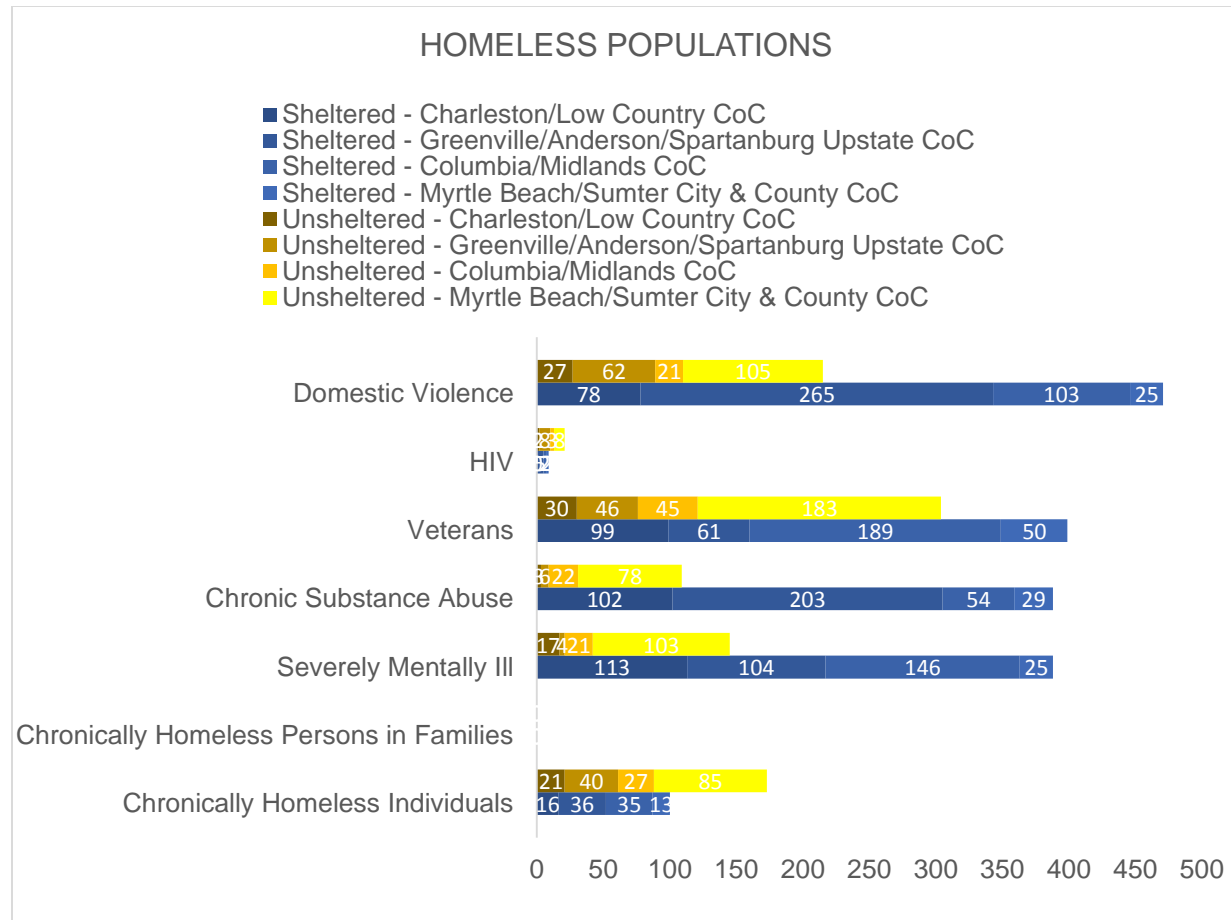
Although 247 adult and children were living together in families without shelter in South Carolina, the Housing Inventory Count reports 265 to 544 beds were available and not all of these beds may have been in available units. When evaluating the number of beds needed in each CoC, a total of 88 to 111 additional beds are needed for adults and children in families.

HOMELESS CHILDREN, ADULTS, AND FAMILIES & NEEDED SHELTER BEDS – 2014

Continuum of Care	Adults and Children Without Shelter	Emergency Shelter Beds Available for Households With Children	Transitional Housing Beds Available for Households With Children	Permanent Supportive Housing Beds Available for Households With Children	Additional Beds Needed for Persons in Households With Children
Charleston/Low Country CoC	3	21 – 26 (21 DV)	6	23	0
Greenville/Anderson/Spartanburg Upstate CoC	40	73 – 136 (28 – 38 DV)	40 – 61	0 – 2	0
Columbia/Midlands CoC	50	19 – 49 (22 – 43 DV)	40 – 71	0 – 104 (0 – 88 V)	0
Myrtle Beach/Sumter City & County CoC	154	37 – 56 (14 – 26 DV)	6 – 10	0	88 – 111
South Carolina Total	247	150 – 267 (85 – 128 DV)	92 – 148	23 – 129 (0 – 88 V)	88 – 111
Notes: V = Veteran bed DV = Domestic Violence Bed					

Homeless Populations

In South Carolina, 5 percent of the 5,507 persons homeless on a given night in January 2014 were chronically homeless. Also, 10 percent were characterized as severely mentally ill and 9 percent were characterized as having chronic substance abuse. Veterans comprised 13 percent of the homeless population, domestic violence survivors comprised 13 percent of the homeless population, and persons with HIV/AIDS comprised 0.5 percent of the homeless population.



Chronically Homeless Persons

Of the 5,057 homeless people in South Carolina, 273 were chronically homeless. Sixty-three percent of the chronically homeless persons were without shelter: 173 individuals and 0 persons in families.

Forty-nine percent of the chronically homeless individuals without shelter were in the Myrtle Beach/Sumter City & County CoC, 23 percent were in the Greenville/Anderson/Spartanburg Upstate CoC, 15 percent were in the Columbia/Midlands CoC, and 12 percent were in the Charleston/Low Country CoC. The Housing Inventory Count reports between 263 and 419 rapid rehousing, transitional housing, permanent housing, and safe haven beds were available for households without children. When evaluating the number of beds needed in each CoC, a total of 81 to 85 more transitional housing, permanent housing, and rapid-rehousing beds may be needed for chronically homeless individuals.

Continuum of Care	Chronically Homeless Individuals Without Shelter	Transitional Housing Beds Available for Households Without Children	Permanent Supportive Housing Beds Available for Households Without Children	Additional Beds Needed for Chronically Homeless Individuals
Charleston/Low Country CoC	21	25 (15 V)	59	0
Greenville/Anderson/Spartanburg Upstate CoC	40	88 – 105 (9 V)	6 – 8	0 ¹
Columbia/Midlands CoC	27	75 – 106 (18 V)	9 – 111 (8 – 96 V)	0
Myrtle Beach/Sumter City & County CoC	85	0 – 4	0	81 – 85
South Carolina Total	173	188 – 240 (42 V)	74 – 178 (8 – 96 V)	81 – 85 ¹
Notes: V = Veteran bed DV = Domestic Violence Bed				
¹ Total reflects 1 OPH bed (1 V) available for households without children				

There were no chronically homeless persons in families reported in South Carolina. The Housing Inventory Count reports between 115 and 277 rapid rehousing, transitional housing, permanent housing beds, and safe haven beds were available for households with children. Therefore, there may have been enough beds for chronically homeless persons in families.

HOMELESS CHILDREN, ADULTS, AND FAMILIES & NEEDED SHELTER BEDS – 2014

Continuum of Care	Chronically Homeless Persons in Families Without Shelter	Transitional Housing Beds Available for Households With Children	Permanent Supportive Housing Beds Available for Households With Children	Additional Beds Needed for Chronically Homeless Persons in Families
Charleston/Low Country CoC	0	6	23	0
Greenville/Anderson/Spartanburg Upstate CoC	0	40 – 61	0 – 2	0
Columbia/Midlands CoC	0	40 – 71	0 – 104 (0 – 88 V)	0
Myrtle Beach/Sumter City & County CoC	0	6 – 10	0	0
South Carolina Total	0	92 – 148	23 – 129 (0 – 88 V)	0
Notes: V = Veteran bed DV = Domestic Violence Bed				

Domestic Violence Survivors

Of the 5,057 homeless people in South Carolina, 686 were escaping domestic violence. Thirty-one percent of the domestic violence survivors (215 individuals) were without shelter.

Forty-eight percent of the domestic violence survivors without shelter were in the Myrtle Beach/Sumter City & County CoC, 28 percent were in the Greenville/Anderson/Spartanburg Upstate CoC, 12 percent were in the Charleston/Low Country CoC, and 9 percent were in the Columbia/Midlands CoC. The Housing Inventory Count reports between 9 and 53 domestic violence and rapid rehousing beds for households without children and between 85 and 128 domestic violence and rapid rehousing beds for households with children. Depending on the number of beds in available units, between 77 and 122 more beds may be needed for adults and children escaping domestic violence in South Carolina. With only 9 to 53 of the domestic violence beds available for adult individuals and no domestic violence beds available for adult individuals in 1 to 3 of the CoC areas, additional domestic violence beds may be needed.

Continuum of Care	Households Without Children				Households With Children			Additional Beds Needed for Domestic Violence Survivors
	DV Survivors w/o Shelter	ES Beds	TH Beds	PSH Beds	ES Beds	TH Beds	PSH Beds	
Charleston/Low Country CoC	27	0	0	0	21	0	0	6
Greenville/Anderson/Spartanburg Upstate CoC	62	0 – 10	0	0	28 – 38	0	0	14 – 34
Columbia/Midlands CoC	21	0 – 21	0	0	22 – 43	0	0	0
Myrtle Beach/Sumter City & County CoC	105	9 – 22	0	0	14 – 26	0	0	57 – 82
South Carolina Total	215	9 – 53	0	0	85 – 128	0	0	77 – 122

Conclusion

In South Carolina, there were 5,057 homeless persons and 1,808 persons without shelter. There may have been enough beds for children living alone, but at least 108 additional beds are needed for young adults alone without shelter, 726 to 1,013 additional beds are needed for adult individuals without shelter, and 88 to 111 additional beds are needed for adults and children in families without shelter. There may have been enough beds for chronically homeless persons in families, but at least 81 to 85 additional beds are needed for chronically homeless individuals and 77 to 122 additional domestic violence beds are needed. Additional shelters or beds are needed in all four South Carolina CoCs.