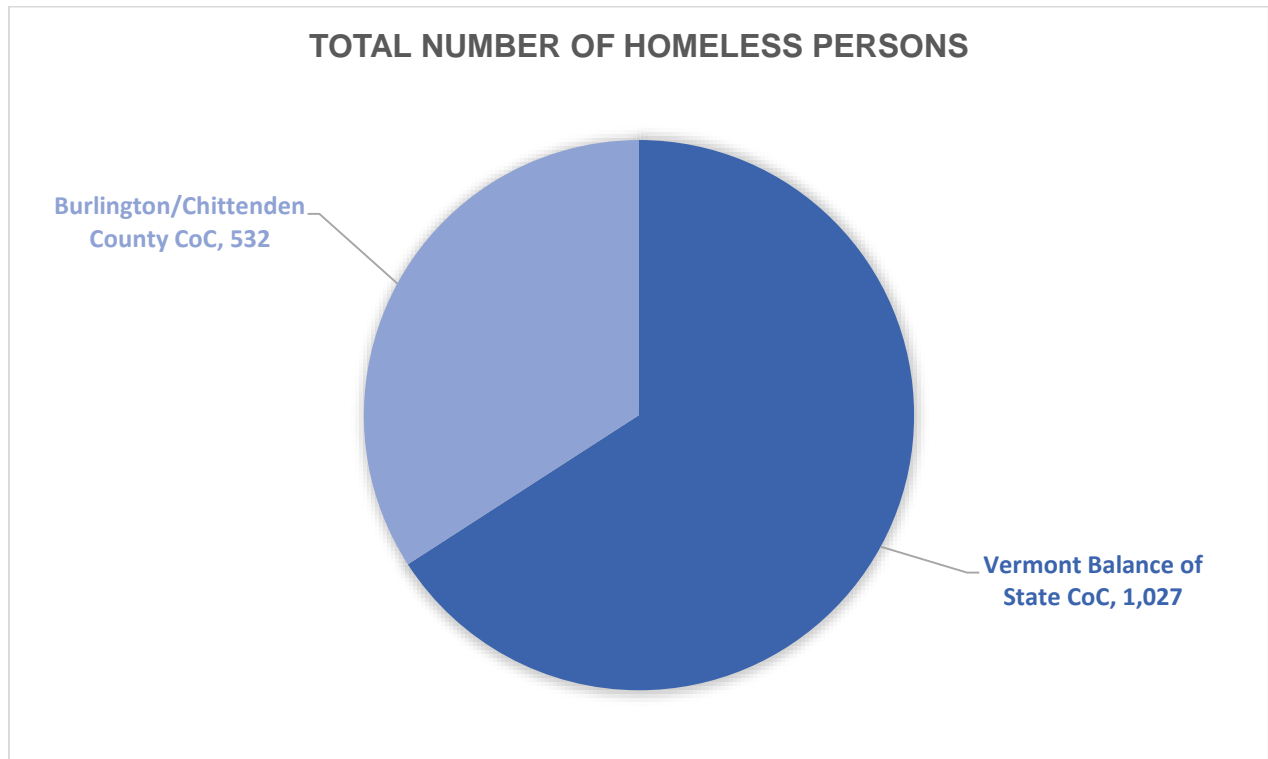


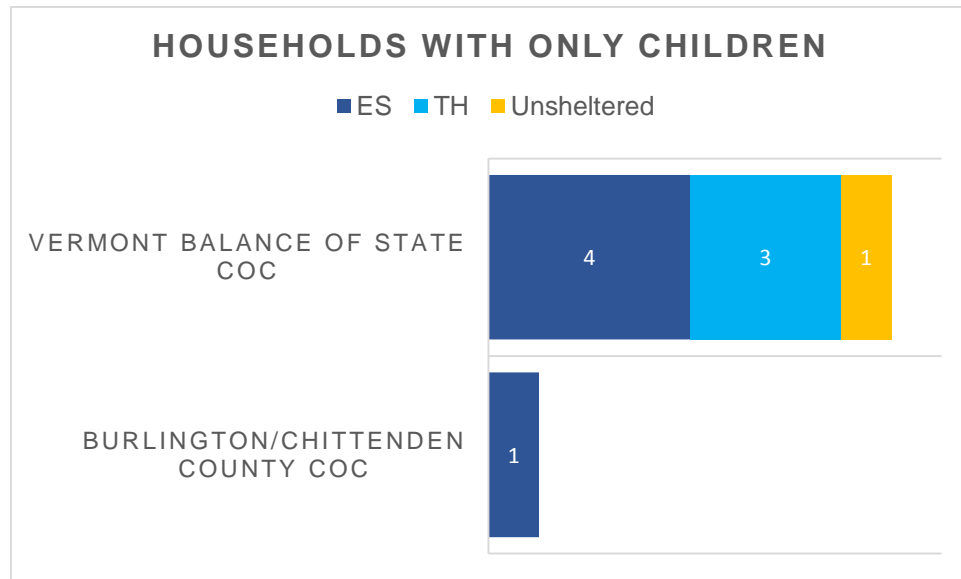
## VERMONT

In Vermont, there were 1,559 homeless persons on a given night in January 2014. As the figure shows, 1,027 of them were in the Vermont Balance of State CoC and 532 were in the Burlington/Chittenden County CoC. There were 9 children alone, 736 persons in households with children, 128 young adults ages 18 to 24 alone, and 686 adults ages 24 and older alone. Ten percent of the homeless persons in Vermont were without shelter.



## Children Alone

Of the 9 children alone, 88 percent were in the Vermont Balance of State CoC. In the Vermont Balance of State CoC, 4 children were in emergency shelters, 3 children were in transitional housing, and 1 child was without shelter. The one child in the Burlington/Chittenden County CoC was in an emergency shelter.

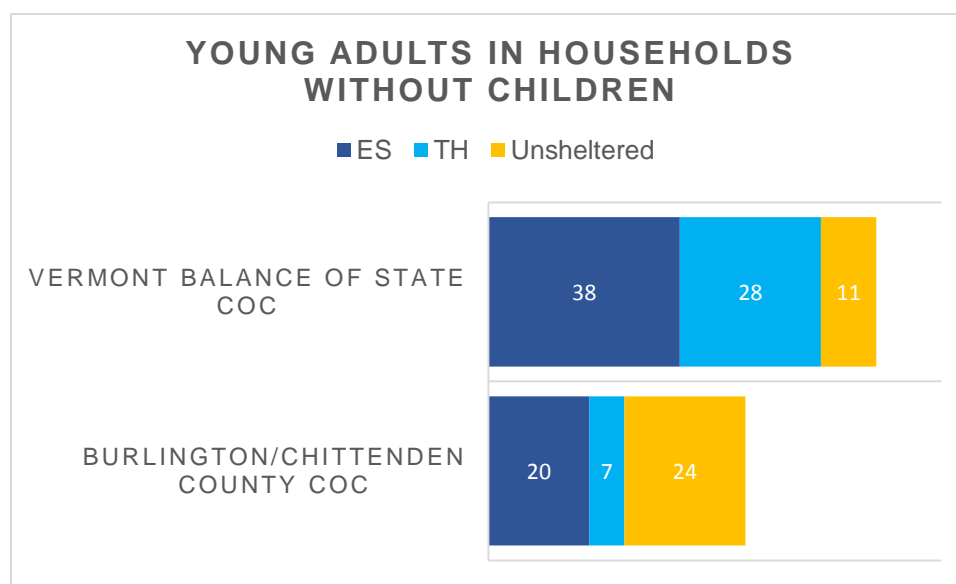


Although 1 child living alone was without shelter, the Housing Inventory Count reports no youth beds available for children alone. Therefore, 1 additional youth bed is needed for children living alone.

Continuum of Care	Children Alone Without Shelter	Emergency Shelter Youth Beds Available for Children Alone	Transitional Housing Youth Beds Available for Children Alone	Permanent Supportive Housing Beds Available for Children Alone	Additional Beds Needed for Children Alone
Vermont Balance of State CoC	1	0	0	0	1
Burlington/Chittenden County CoC	0	0	0	0	0
Vermont Total	1	0	0	0	1

## Young Adults Alone

Of the 128 young adults living alone in Vermont, 58 were in emergency shelters, 35 were in transitional housing, and 35 were without shelter. Sixty percent of the young adults were living in the Vermont Balance of State CoC and 39 percent were living in the Burlington/Chittenden County CoC.



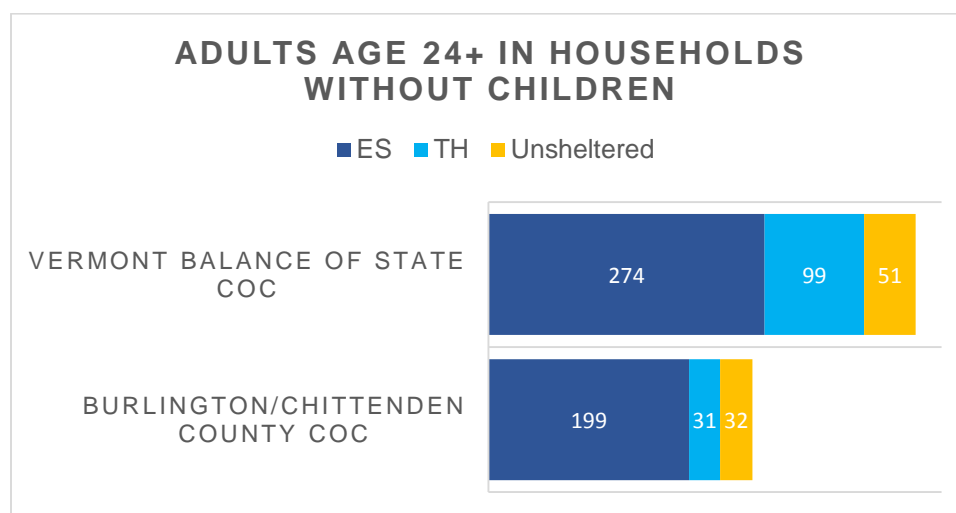
Twenty-seven percent of the young adults were without shelter. Sixty-eight percent of the young adults without shelter were in the Burlington/Chittenden County CoC and 31 percent were in the Vermont Balance of State CoC.

Although 35 young adults were without shelter in Vermont, the Housing Inventory Count reports only 8 youth beds were available for young adults alone. When evaluating the number of beds needed in each CoC, a total of 27 additional beds are needed for young adults alone without shelter in Vermont.

Continuum of Care	Young Adults Alone Without Shelter	Emergency Shelter Beds Available for Young Adults Alone	Transitional Housing Beds Available for Young Adults Alone	Permanent Supportive Housing Beds Available for Young Adults Alone	Additional Beds Needed for Young Adults Alone
Vermont Balance of State CoC	11	0	2	0	9
Burlington/Chittenden County CoC	24	1	5	0	18
Vermont Total	35	1	7	0	27

## Adults Alone

Of the 686 adults age 24 and older living in households without children in Vermont, 473 were in emergency shelters, 130 were in transitional housing, and 83 were without shelter. Sixty-one percent of the adults age 24 and older were located in the Vermont Balance of State CoC and 38 percent were in the Burlington/Chittenden County CoC.



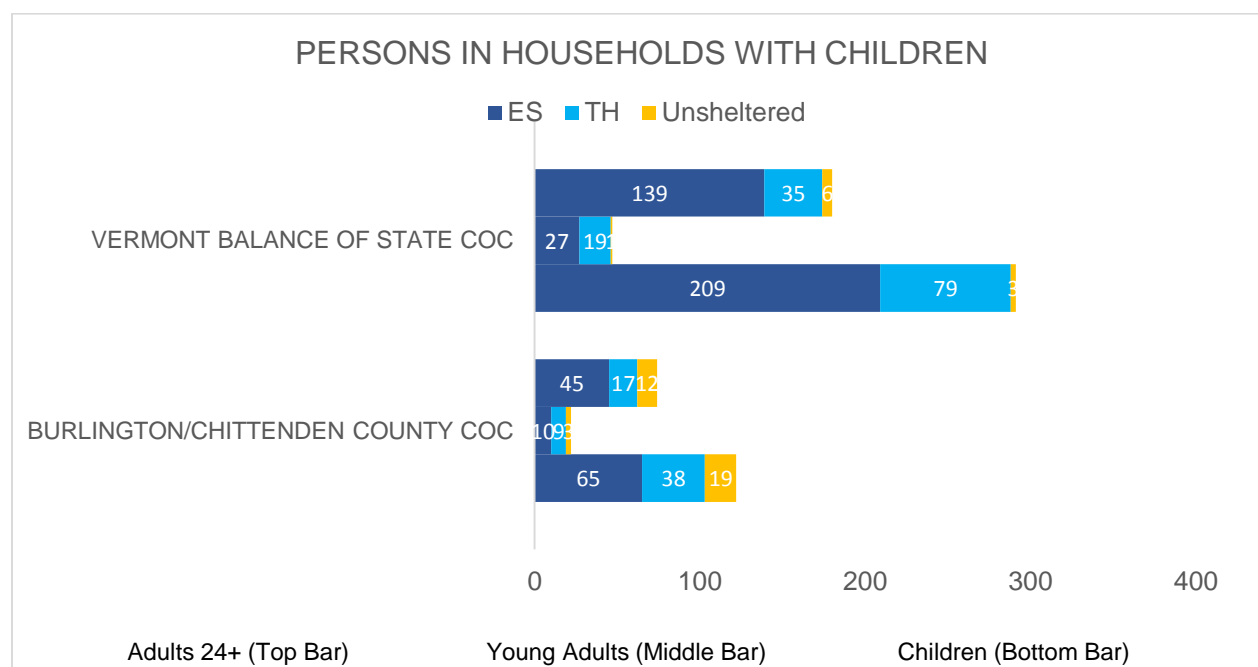
Twelve percent of the adult individuals were without shelter. Sixty-one percent of the adults age 24 and older were located in the Vermont Balance of State CoC and 38 percent were in the Burlington/Chittenden County CoC.

Although 83 adult individuals were without shelter in Vermont, the Housing Inventory Count reports only 25 to 48 beds were available for adult individuals age 24 and older. When evaluating the number of beds needed in each CoC, a total of 35 to 58 additional beds are needed for adult individuals without shelter.

Continuum of Care	Adult Individuals Without Shelter	Emergency Shelter Beds Available for Households Without Children	Transitional Housing Beds Available for Households Without Children	Permanent Supportive Housing Beds Available for Households Without Children	Additional Beds Needed for Adults 24+ Alone
Vermont Balance of State CoC	51	5 – 23 (5 – 14 DV)	9 – 10 (7 V)	2	16 – 35
Burlington/Chittenden County CoC	32	4 – 5 (0 – 1 DV)	1 – 4 (0 – 3 V)	4	19 – 23
Vermont Total	83	9 – 28 (5 – 15 DV)	10 – 14 (7 – 10 V)	6	35 – 58
Notes: V = Veteran bed DV = Domestic Violence Bed					

## Families With Children

Of the 736 homeless adults and children living together in families in Vermont, 495 were in emergency shelters, 197 were in transitional housing, and 44 were without shelter. Seventy percent of the persons in households with children were living in the Vermont Balance of State CoC and 29 percent were living in the Burlington/Chittenden County CoC.

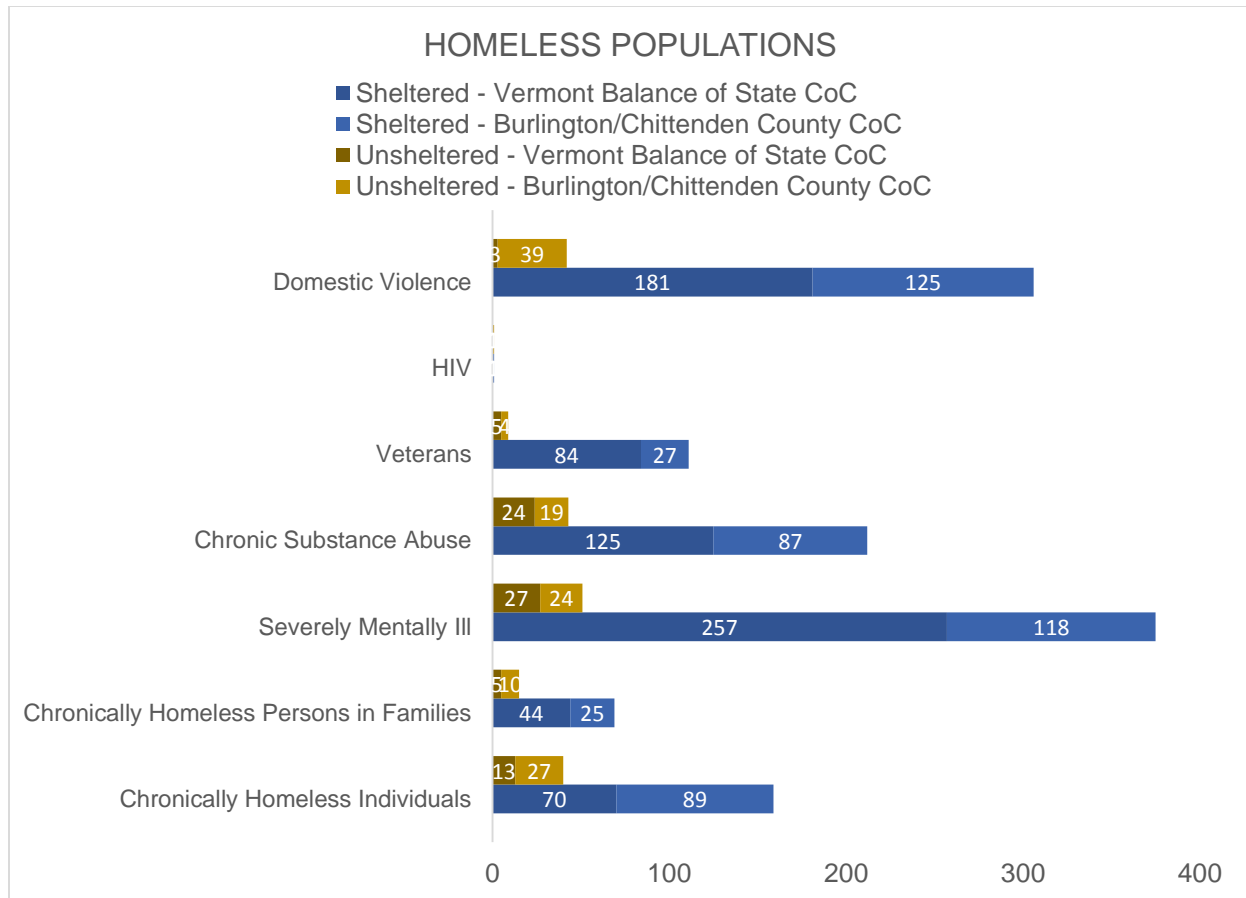


Although 44 adult and children were living together in families without shelter in Vermont, the Housing Inventory Count reports 25 to 48 beds were available and not all of these beds may have been in available units. When evaluating the number of beds needed in each CoC, a total of 30 to 34 additional beds may be needed for adults and children in families.

Continuum of Care	Adults and Children Without Shelter	Emergency Shelter Beds Available for Households With Children	Transitional Housing Beds Available for Households With Children	Permanent Supportive Housing Beds Available for Households With Children	Additional Beds Needed for Persons in Households With Children
Vermont Balance of State CoC	10	25 – 43 (23 – 32 DV)	0 – 1	0	0
Burlington/Chittenden County CoC	34	0 – 1 (0 – 1 DV)	0 – 3 (0 – 3 V)	0	30 – 34
Vermont Total	44	25 – 44 (23 – 33 DV)	0 – 4 (0 – 3 V)	0	30 – 34
Notes: V = Veteran bed DV = Domestic Violence Bed					

## Homeless Populations

In Vermont, 18 percent of the 1,559 persons homeless on a given night in January 2014 were chronically homeless. Also, 27 percent were characterized as severely mentally ill and 16 percent were characterized as having chronic substance abuse. Veterans comprised 7 percent of the homeless population, domestic violence survivors comprised 22 percent of the homeless population, and persons with HIV/AIDS comprised 0.1 percent of the homeless population.



### Chronically Homeless Persons

Of the 1,559 homeless people in Vermont, 283 were chronically homeless. Nineteen percent of the chronically homeless persons were without shelter: 40 individuals and 15 persons in families.

Sixty-seven percent of the chronically homeless individuals without shelter were in the Burlington/Chittenden County CoC and 32 percent were in the Vermont Balance of State CoC. The Housing Inventory Count reports between 16 and 20 rapid rehousing, transitional housing, permanent housing, and safe haven beds were available for households without children. When evaluating the number of beds needed in each CoC, a total of 20 to 24 additional transitional housing, permanent housing, and rapid-rehousing beds may be needed for chronically homeless individuals.

Continuum of Care	Chronically Homeless Individuals Without Shelter	Transitional Housing Beds Available for Households Without Children	Permanent Supportive Housing Beds Available for Households Without Children	Additional Beds Needed for Chronically Homeless Individuals
Vermont Balance of State CoC	13	9 – 10 (7 V)	2	1 – 2
Burlington/Chittenden County CoC	27	1 – 4 (0 – 3 V)	4	19 – 22
Vermont Total	40	10 – 14 (7 – 10 V)	6	20 – 24
Notes: V = Veteran bed DV = Domestic Violence Bed				

Two-thirds of the chronically homeless persons in families without shelter were in the Burlington/Chittenden County CoC and one-third were in the Vermont Balance of State CoC. The Housing Inventory Count reports between 0 and 4 rapid rehousing, transitional housing, permanent housing, and safe haven beds were available for households with children. When evaluating the number of beds needed in each CoC, a total of 11 to 15 additional transitional housing, permanent housing, and rapid-rehousing beds may be needed for chronically homeless persons in families.

Continuum of Care	Chronically Homeless Persons in Families Without Shelter	Transitional Housing Beds Available for Households With Children	Permanent Supportive Housing Beds Available for Households With Children	Additional Beds Needed for Chronically Homeless Persons in Families
Vermont Balance of State CoC	5	0 – 1	0	4 – 5
Burlington/Chittenden County CoC	10	0 – 3 (0 – 3 V)	0	7 – 10
Vermont Total	15	0 – 4 (0 – 3 V)	0	11 – 15
Notes: V = Veteran bed DV = Domestic Violence Bed				

## Domestic Violence Survivors

Of the 1,559 homeless people in Vermont, 348 were escaping domestic violence. Twelve percent of the domestic violence survivors (42 individuals) were without shelter.

Ninety-two percent of the domestic violence survivors without shelter were in the Burlington/Chittenden County CoC and 7 percent were in the Vermont Balance of State CoC. The Housing Inventory Count reports between 5 and 15 domestic violence and rapid rehousing for households without children and between 23 and 33 domestic violence and rapid rehousing beds for households with children. Depending on the number of beds in available units, between 37 and 39 more beds may be needed for adults and children escaping domestic violence in Vermont. With only 5 to 15 of the domestic violence beds available for adult individuals and only 0 to 1 domestic violence beds available in the Burlington/Chittenden County CoC, additional domestic violence beds may be needed.

Continuum of Care	DV Survivors w/o Shelter	Households Without Children			Households With Children			Additional Beds Needed for Domestic Violence Survivors
		ES Beds	TH Beds	PSH Beds	ES Beds	TH Beds	PSH Beds	
Vermont Balance of State CoC	3	5 – 14	0	0	23 – 32	0	0	0
Burlington/Chittenden County CoC	39	0 – 1	0	0	0 – 1	0	0	37 – 39
Vermont Total	42	5 – 15	0	0	23 – 33	0	0	37 – 39

## Conclusion

In Vermont, there were 1,559 homeless persons and 163 persons without shelter. At least 1 additional bed is needed for children living alone without shelter, 27 additional beds are needed for young adults alone without shelter, 35 to 58 additional beds are needed for adult individuals without shelter, and 30 to 34 additional beds are needed for adults and children in families without shelter. At least 20 to 24 additional beds are needed for chronically homeless individuals, 11 to 15 additional beds are needed for chronically homeless persons in families, and 37 to 39 additional domestic violence beds are needed. Additional shelters or beds are needed in both Vermont CoCs.